

# Monster Plush Toys



Stitch up a trio of cute monster plush toys. Use your craft cutting machine to cut out the fabrics for the monster shapes as well as cutting the heat transfer vinyl for the face details. Then, use your sewing machine to stitch them up! Try different combinations of eyes and mouths to make new faces on the toys, or even use fabrics with a print design for even more customization. The choice is yours.

## What you need

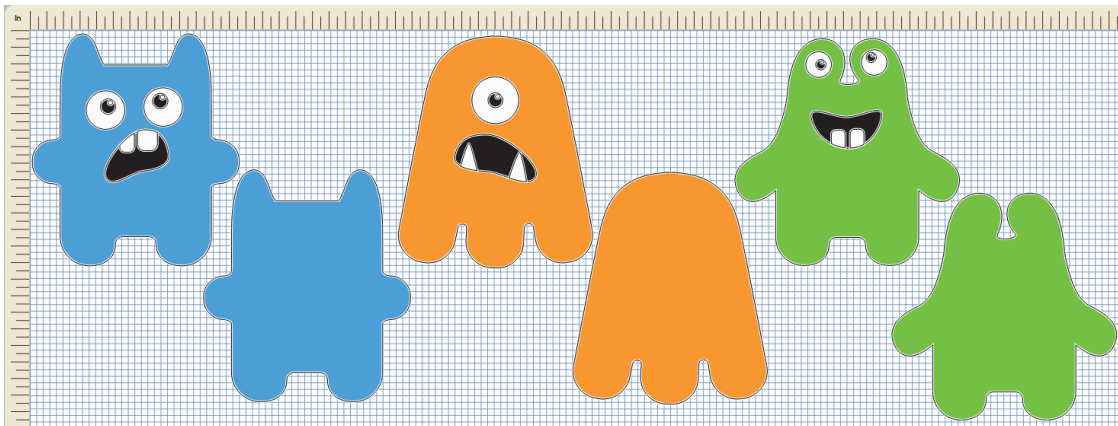
- Cotton Fabrics in Blue, Green and Lime – 24" x 24" (61cm x 61cm) for each monster
- Lightweight Fusible Interfacing (optional)
- Heat Transfer Vinyl (Black)
- Heat Transfer Vinyl (White)
- Fabric Grip Mat 24" x 24"
- Standard Grip Mat 12" x 12"
- Rotary Blade
- Basic Blade
- Brayer
- Heat Press

- Parchment Paper
- Sewing Machine
- Thread
- Polyester Fiberfill Stuffing
- Hand Sewing Needle

## Directions

*Note: If using optional lightweight interfacing, it can be applied to the back of the fabric before cutting.*

1. Open the project in Canvas. Place the fabric for the first monster onto the Fabric Grip Mat, with the right side of the fabric facing toward you. Use a Brayer to help adhere the fabric to the cutting mat, eliminating wrinkles or bubbles.

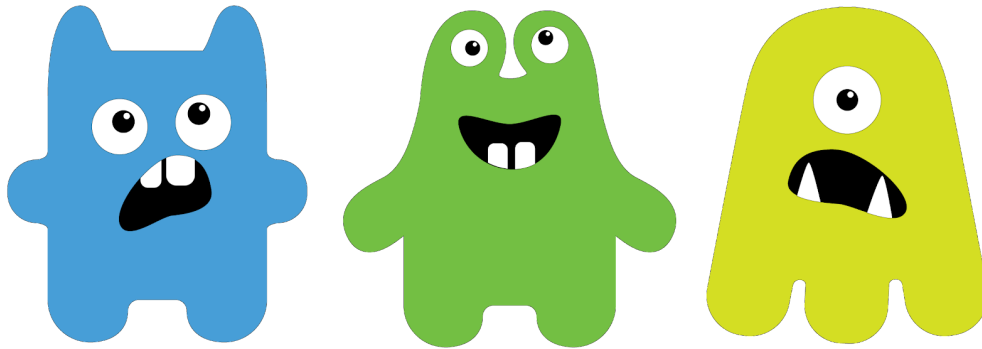


2. Go to the Output Menu and press Send to Machine. Follow the steps to cut the fabric for the monster front and back on your crafting machine. Set aside for now.

*Note: When using more than one material, check all settings and customize inputs for your mat size, material type, material size, and arrangement of pieces before selecting next to begin cutting each layer.*

3. Place the black Heat Transfer Vinyl onto the Standard Grip Mat. Rearrange to reduce waste. Cut the black vinyl. When the black vinyl is finished being cut, do the same process for the white Heat Transfer Vinyl.
4. Use a Weeding Tool to remove unwanted iron-on pieces, leaving the design on the clear liner.

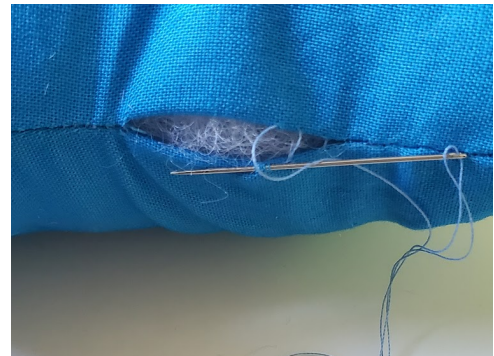
5. Arrange your vinyl designs and cover with a piece of parchment paper to protect your pressing tool. Using your Heat Press, apply the first layer of Heat Transfer Vinyl – the black part of the mouth – in place on the monster front. Once cool, use your Heat Press to apply the whites of the eyes and the teeth. Then, repeat the process for the black part of the eyes.



6. Place the monster back piece over the monster front piece with right sides facing. Pin and then stitch around the perimeter, using a  $\frac{1}{4}$ " (7mm) seam allowance and leaving a 3" (7.5cm) opening unstitched. Clip the curves.



7. Turn the monster right side out through the opening. Stuff the monster with fiberfill stuffing, then hand stitch the opening closed.



8. Repeat the process to create the two remaining monsters.

