

Cutwork Handbag



This handbag consists of an outer layer of double-sided vinyl and a fabric lining. The outer layer features intricate cut outs created with your craft cutting machine. The fabric lining holds the bag's contents as well as enhances the cutwork design in the vinyl. The finished size of the main handbag (not including handles) is approximately 17" x 9½" x 4" (43cm x 24cm x 10cm).

What you need

- One Roll 12" x 53" Double-Sided Vinyl (for outer bag), maximum 1.8mm thickness
- Canvas (for bag lining), cut 17" x 22½" (43cm x 57cm)
- Strong Grip Mat 12" x 24"
- Rotary Blade
- Sewing Machine
- Overlock Machine
- Polyester Thread
- 3 Spools Overlock Thread
- Leather Needle - Size 14/90

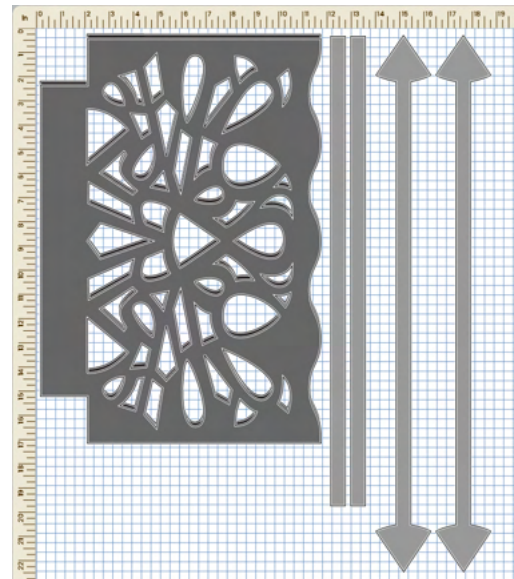
- Non-Stick Presser Foot
- Hand Sewing Needle
- Clear-Drying Adhesive (appropriate for gluing vinyl)
- Painter's Tape
- Paper Clips
- Fabric Marker
- Ruler

Directions

1. Open the project in Canvas. Place the material on your Strong Grip Mat. Use a Brayer to adhere your material to the mat. Use Painter's Tape to tape down the edges of the material to help prevent it from shifting during cutting.

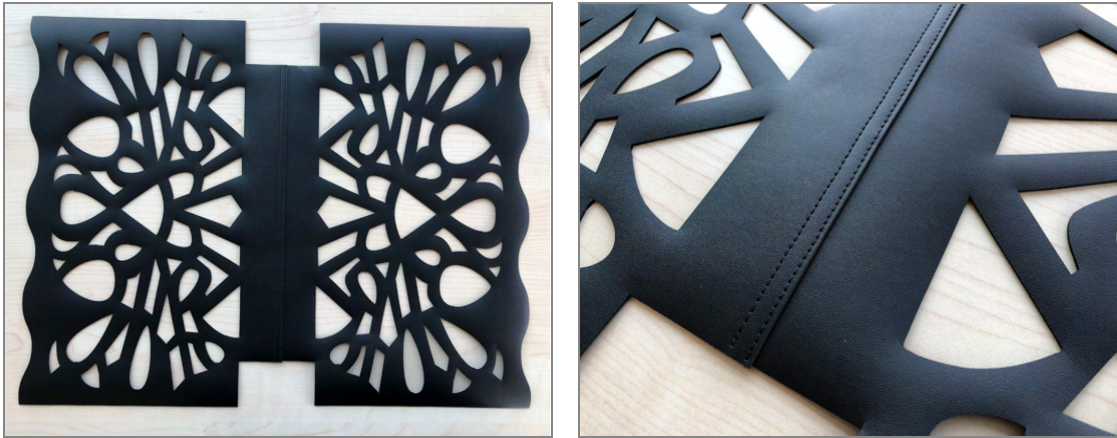
Note: Test cut your material to ensure the correct pressure and speed before starting the design.

2. Go to the Output Menu and press Send to Machine. Rearrange the bag pieces to fit your material. Follow the steps to cut the material on your crafting machine. The file includes the bag front, bag back, 2 outer handles with "arrow-shaped" ends, and 2 inner handles that support the outer handles. Set the 4 handle pieces aside for now.

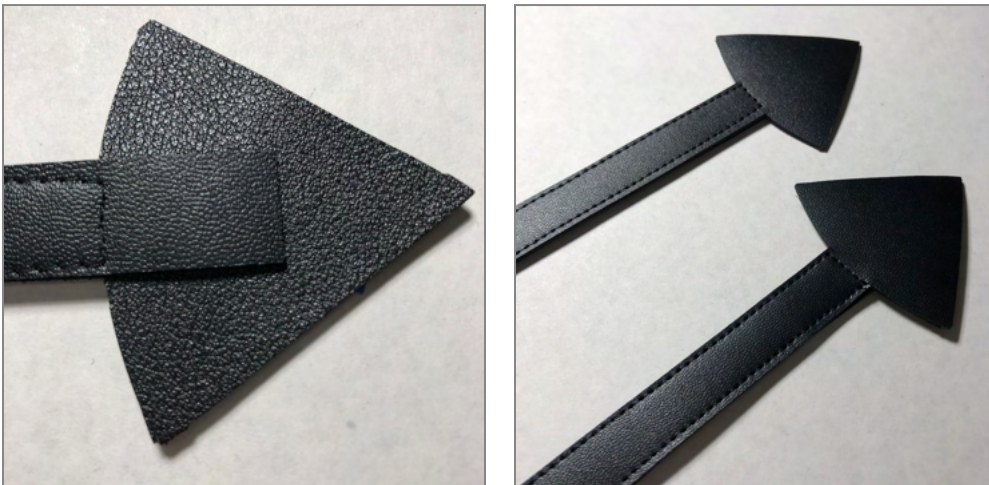


3. Place the bag front and bag back on a flat surface. Overlap the bottom edges of each bag piece by 1cm. You can lightly glue or tape them together to keep them from shifting while sewing, but they must be stitched together in order for the bag to have stability.
4. Set the machine for straight stitch, with a stitch length of no less than 3mm (stitches that are too close together can cause the vinyl to become perforated). Insert a leather needle size 14/90 (a leather needle will pierce through the vinyl layers smoothly). Thread the top of the machine and bobbin with polyester thread.

5. Sew two parallel rows of stitching to create the bag bottom. Set the bag aside for now to prepare the handles.



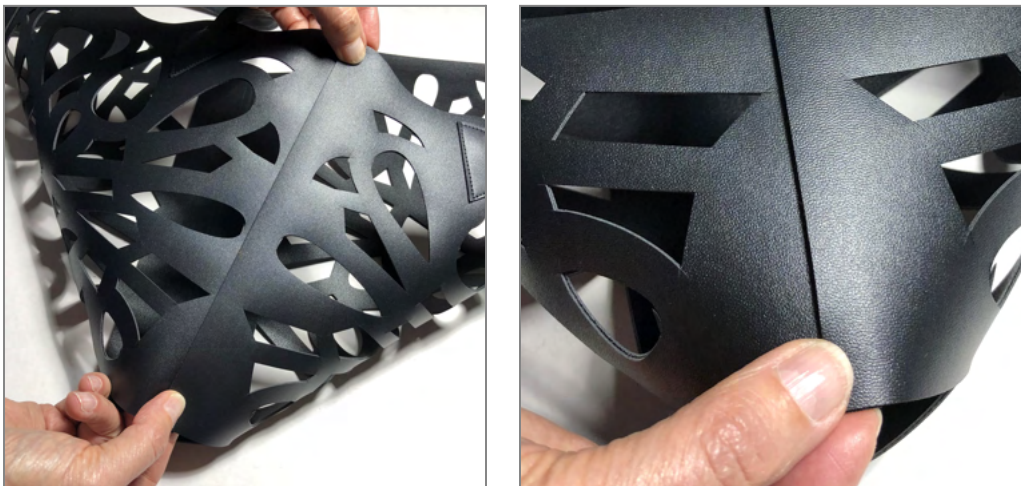
6. Place one inner handle (straight strip) and one outer handle (strip with arrowhead ends) together. The inner handle ends will extend into the "arrowhead", giving stability when the bag is complete. Stitch them together, sewing down each side close to the edges.



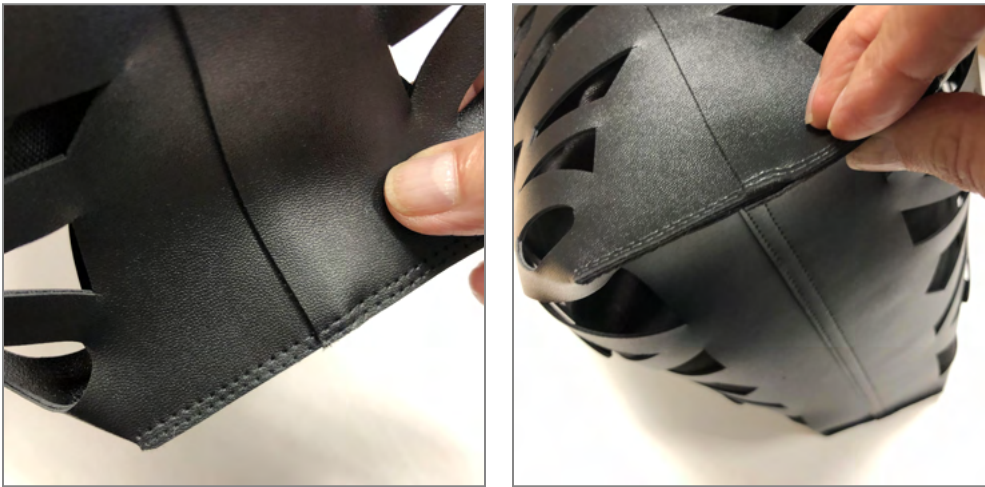
7. Starting on one side of the bag, place one handle piece end into position on the bag front. Stitch around the "arrowhead" shape to secure it onto the bag. Position the other handle end onto the bag, making sure the handle is not twisted. Stitch in place.



8. Repeat Step #7 for the other handle unit, stitching it to the opposite side of the bag.
9. Bring the sides of the bag together and overlap them by $\frac{3}{8}$ " (1cm). Glue together using the clear-drying adhesive. Do one side first and let it dry completely so it is secure before gluing the opposite side. *Allow to thoroughly dry* before proceeding to the next steps.



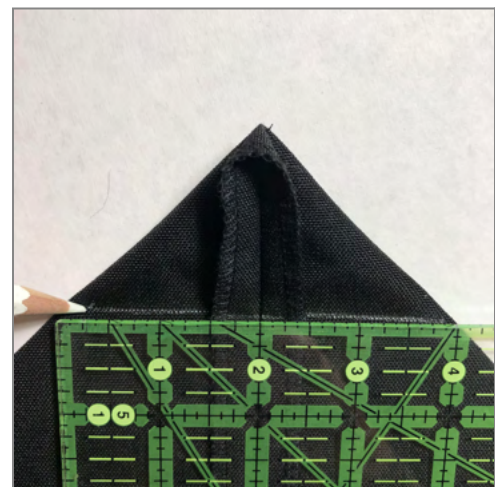
10. Bring the side and bottom together on one side, then sew 2 rows of stitching. Repeat for the other side. This will help give the bag shape and added stability. Set aside to create the lining.



11. Use an overlock machine to clean-finish the four sides of the lining fabric. (If you don't have an overlock machine, use a sewing machine overedge stitch.) Fold the lining piece in half with the wrong sides facing. Stitch each side using a 1/2" seam allowance.



12. Box the corners of the bag lining. Starting with one side of the bag, lay the side seam down against the bag, forming a point. Use a ruler to make sure the seam is centered, then use a fabric marker to draw a stitching guideline. For this project, the stitch guideline is 2" (5cm) down from the point, and 4" (10cm) from side to side.



13. Pin and then stitch across, following the drawn stitch guidelines. Repeat for the opposite corner. When finished, if desired, fold the “points” toward the bottom of the lining and use a hand sewing needle to stitch them in place.



14. Fold the top edge of the canvas by ¼” (6mm) and press. Topstitch the hem. The lining is now ready to be inserted into the main bag.



15. Use a clear-drying adhesive to carefully glue the lining to the inside of the bag, near the top. It is helpful to “anchor” the side seams first. Use painter’s tape to help position the lining and vinyl. Allow to dry thoroughly.

