

# SINGER® MOMENTO™ Dust Cover



This quilted dust cover protects your SINGER® momento™ craft cutting machine, and it also serves as a color accent to your craft space. Cut out the pieces with your crafting machine and put it together with your sewing machine. Finished size of the cover is 36" x 8" x 10" (92cm x 20cm x 25cm).

## What you need

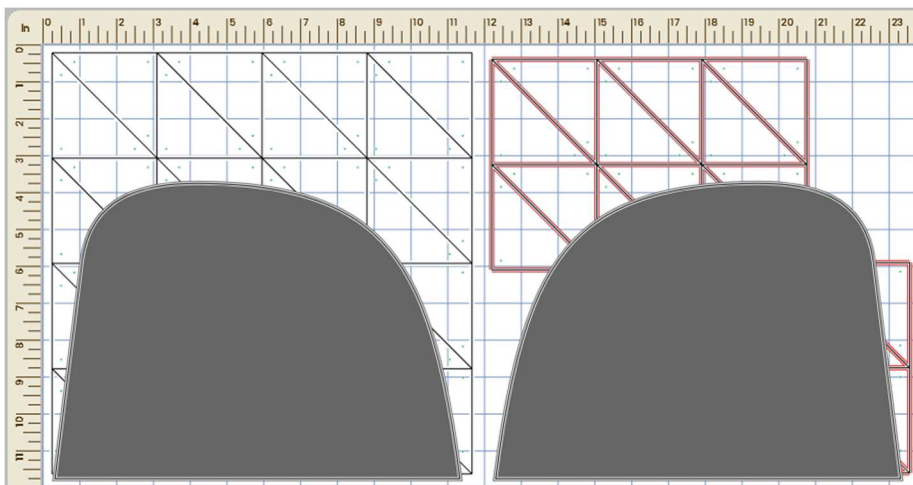
*Note: HST = Half Square Triangle*

- Two Coordinating Red Fabrics, each cut to 9" x 6"
- Seven Coordinating Grey Fabrics, each cut to 12" x 12"
- Red Fabric for Small Border – 2½" (6.5cm) 2 strips
- Charcoal Grey Fabric:
  - Sides of main panel 8" x 22" (20cm x 55cm), 2 pieces
  - Side panels, cut to 12" x 24" (30x 60cm)
  - Binding strips for lower edge, 2 strips 2½" wide (6.5cm)
- Fusible Fleece or Batting: 40" x 22" (100cm x 60cm) for main panel, and two pieces 12" x 12" (30cm x 30cm) for side panels

- Backing Fabric:
  - 1 piece 40" x 22" (100cm x 60cm)
  - 2 pieces 12" x 12" (30cm x 30cm)
  - 1 strip 2" (5cm) wide
- Fabric Grip Mat 12" x 12" and 24" x 24"
- Rotary Blade
- Brayer
- Sewing Machine
- Even Feed / Walking Foot
- Sewing Thread
- Fabric Pen
- Washable Fabric Marking Pencil
- Ruler

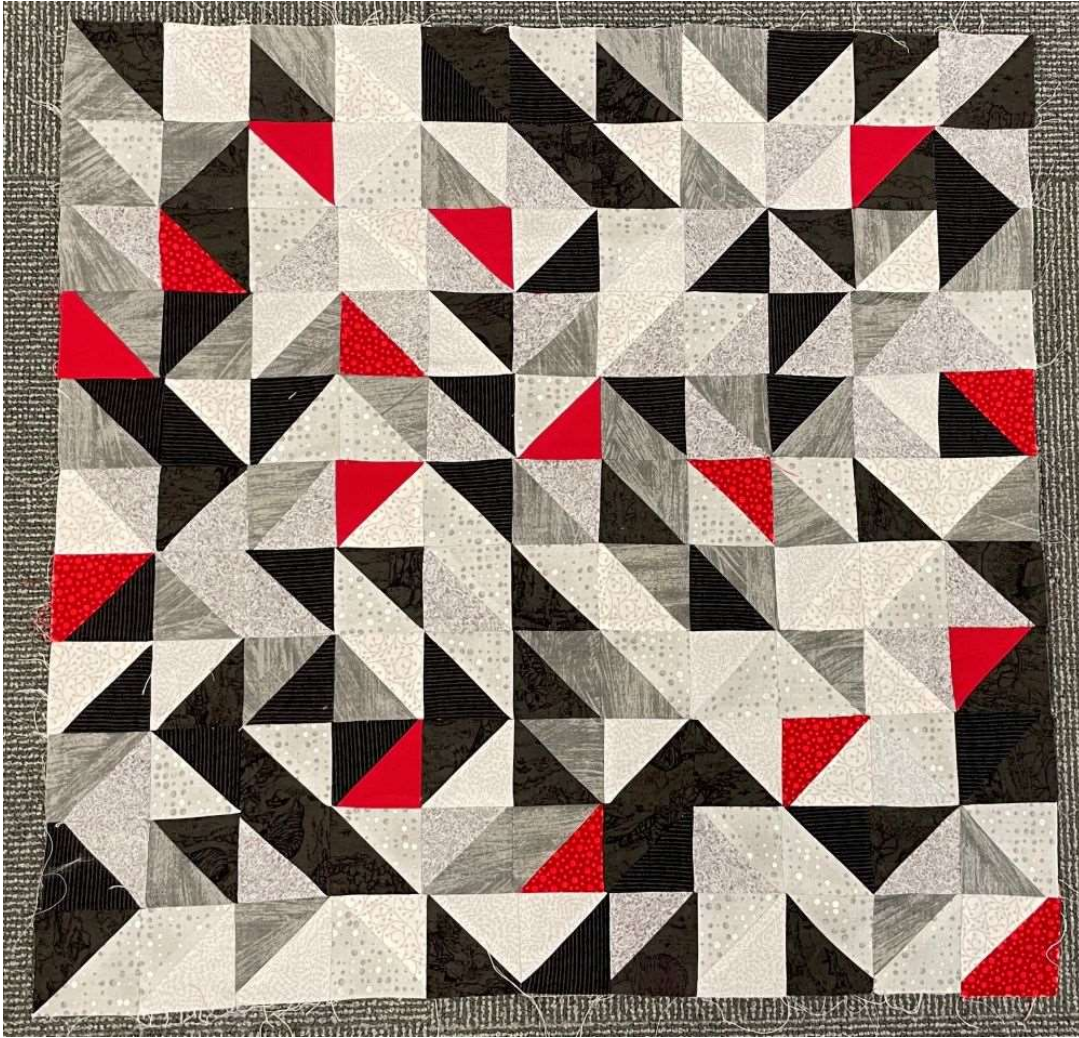
## Directions

1. Open the project in Canvas. Place one of the gray fabrics on your Fabric Grip Mat. Use a Brayer to help adhere the material to the mat, eliminating wrinkles or bubbles. Go to the Output Menu and press Send to Machine. Follow the steps to cut the material on your crafting machine.



2. Repeat the same cut for each of the seven variations of the gray fabric. Then, cut the two red fabrics with your crafting machine, following the instructions in Step 1.
3. Lastly, cut the side pieces with the charcoal fabric, following the instructions in Step 1. Set the cover side pieces aside for now.

4. Sew the Half Square Triangles (HST) together, two by two, in a random order. You will need a total of 121 finished squares.
5. Lay the squares out in a pleasing pattern, 11 squares in a row and 11 rows. Sew the squares together.



6. Take the red 2½" (6.5cm) strips and fold each of them lengthwise and press. The finished width is 1¼" (3.35cm).





7. Measure the finished width of the patchwork piece and cut two strips with exactly the same length. Measure the length in the middle of the patchwork piece, which will provide a more accurate length.

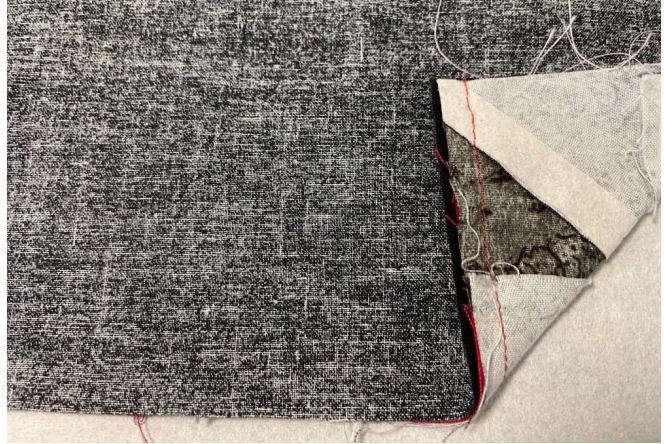


8. Pin one red strip on each side, raw edges even. Sew in place with a  $\frac{1}{4}$ " (6mm) seam allowance.



9. Pin the sides on top of the red strip, with the raw edges even.

10. Turn upside down and sew together in the stitch line from where you attached the folded red strip.
11. Open the piece flat and press.



12. Put the backing fabric for the main panel on the table, wrong side facing up. Lay the batting on top. If using fusible batting, fuse it in place.
13. Add the main panel on top, right side facing up and pin in place.
14. Draw stitching guidelines on the main panel, extending the lines to the sides. Draw several lines in each direction (see image). The lines should not be evenly spaced.



15. Attach the Even Feed / Walking Foot to the sewing machine. Topstitch or quilt following the drawn guidelines, with the sewing machine set for a straight stitch. Alternate between light gray thread and red thread.

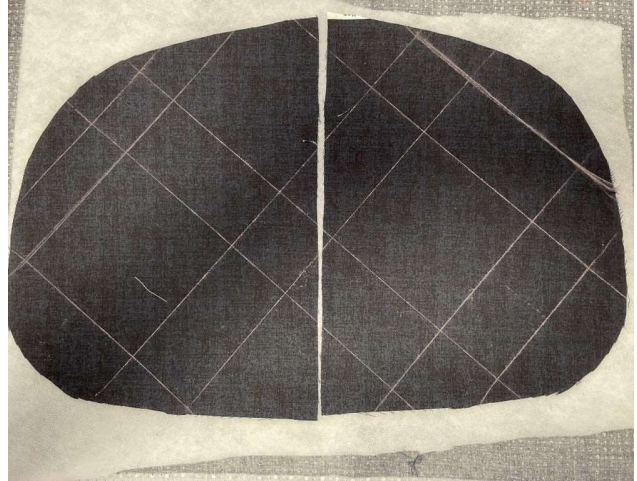




16. The finished result will look like the photo below.



17. Layer the backing fabric and batting together, and then place the cut out pieces on the top of them, right side facing up.



18. Make quilt lines and topstitch them like you did on the main panel. Cut away the access batting.



19. Pin the side panels to the main panel, one on each side with right sides together. Sew in place using a  $\frac{3}{8}$ " (1cm) seam allowance.



20. Take the backing fabric binding strips and sew them to the sides, in the seam you just made.



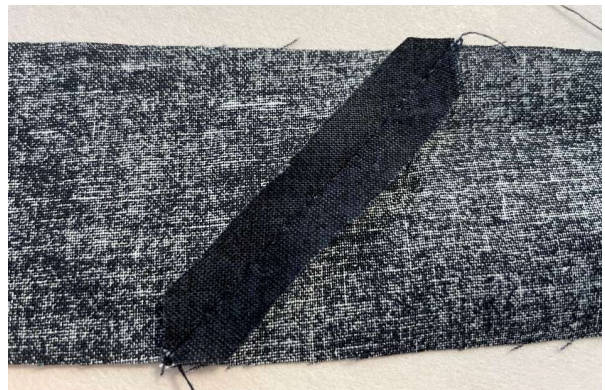
21. Fold the binding strip over to the other side. Fold the raw edges in and topstitch in place. The result should look like the pictures below.







22. To make the binding for the bottom edge, join the strips into one long strip. Make a diagonal join as shown below.



23. Pin the strip on the backing side of the bottom edge.
24. Sew in place using a  $\frac{5}{8}$ " (1.5cm) seam allowance.
25. Fold the strip to the right side, turn the raw edge in and topstitch in place.





