

Plush Toy Bear



Make a cute plush bear to spread joy and love to someone special. The craft cutting machine draws the pattern pieces directly onto the back of the fabric, making it easy to sew along the marked lines. The eyes and nose are cut from heat transfer vinyl. The finished size of the bear is approximately 5" x 8" (12.5cm x 20cm).

What you need

- Fleece Fabric 1/2 yard (45cm)
- Fleece Fabric Red 4" x 8" (10cm x 20cm)
- Heat Transfer Vinyl
- Fabric Grip Mat 12" x 12"
- Standard Grip Mat 12" x 12"
- SINGER® momento™ Heat Removable Fabric Pen
- Basic Blade
- Brayer
- Weeding Tool
- Sewing Machine

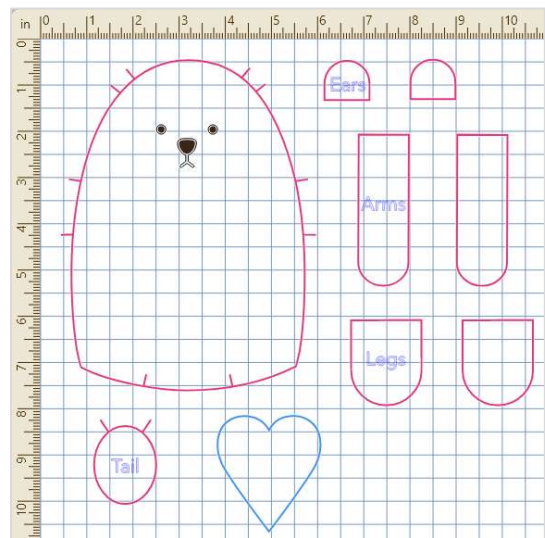
- Thread
- Fiber Fill
- Heat Press
- Parchment Paper
- Scissors
- Straight pins
- Chopstick or similar
- Hand Sewing Needle

Directions

1. Cut two pieces of fleece fabric for the bear, 12" x 12" (30cm x 30cm). For the red heart you need a piece approximately 4" x 8" (10cm x 20cm).

2. Open the project in Canvas. Place one of the bear fabric pieces, right side facing down onto your Fabric Grip Mat. Use a Brayer to help adhere the material to the cutting mat, eliminating wrinkles or bubbles. Insert the Heat Removable Fabric Pen into the left carriage. Follow the steps to draw the shapes on your craft cutting machine.

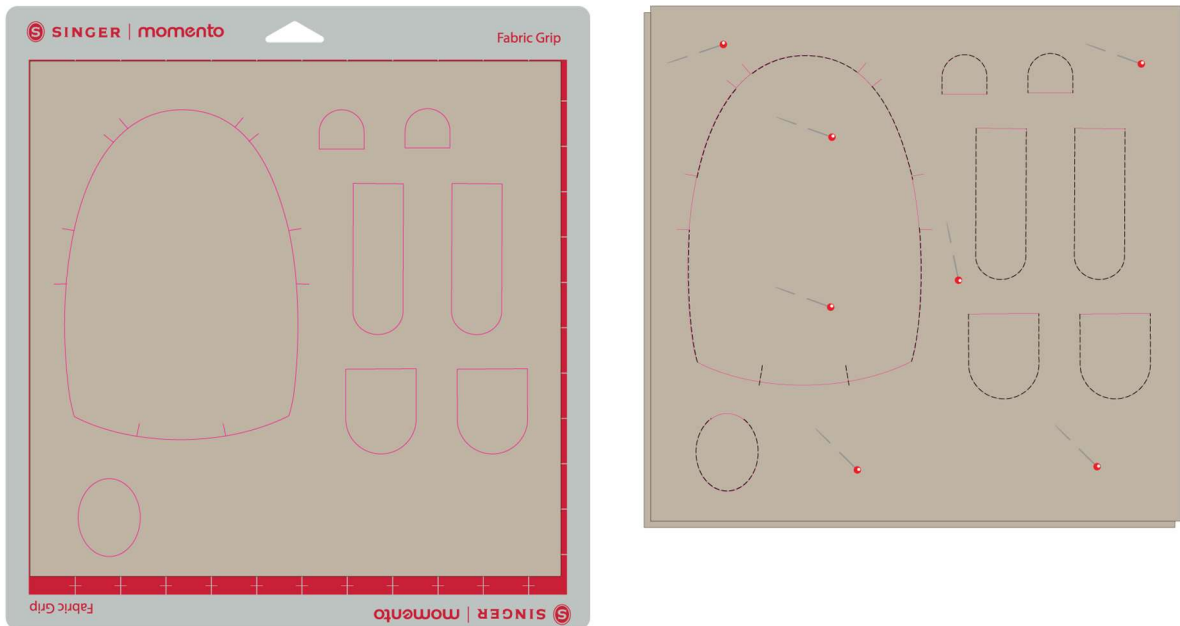
3. Place the red fleece fabric, right side facing down onto your fabric grip mat and follow the steps to draw the heart onto the back of the fabric.



4. Place Heat Transfer Vinyl, shiny side down, on the Standard Grip Mat. Insert the Basic Blade into the right carriage and change the inputs for mat size, material and material size. Follow the steps to cut the vinyl designs on your crafting cutting machine. Set them aside for now.

5. Place the fabric with the drawn pattern, right sides together with the other fabric piece of the same color. Set your sewing machine for straight stitch and sew around the arms, legs, ears and tail. Follow the lines and leave the straight edge open to turn the right side out as shown in the image below. Backstitch at the beginning and end of each seam.

Sew around the body shape leaving openings for arms, ears and the bottom edge. Sew the short seams where the legs will fit as shown by the black stitch lines in the image below. Backstitch at the beginning and end of each seam.

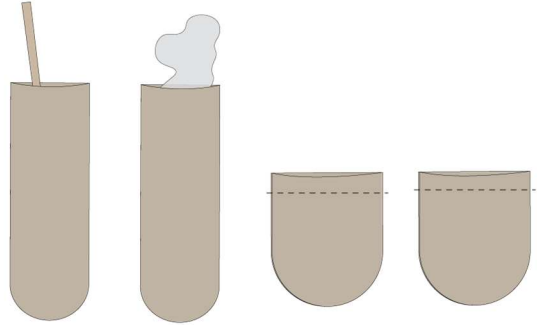


6. Use your scissors to cut around the body parts, approximately $\frac{1}{4}$ " (6mm) from the seam.



7. Turn the arms, legs, and ears right side out. Use a chopstick or similar to push the fabric out.

Stuff the arms and legs with fiber fill. Baste across to hold the stuffing inside.

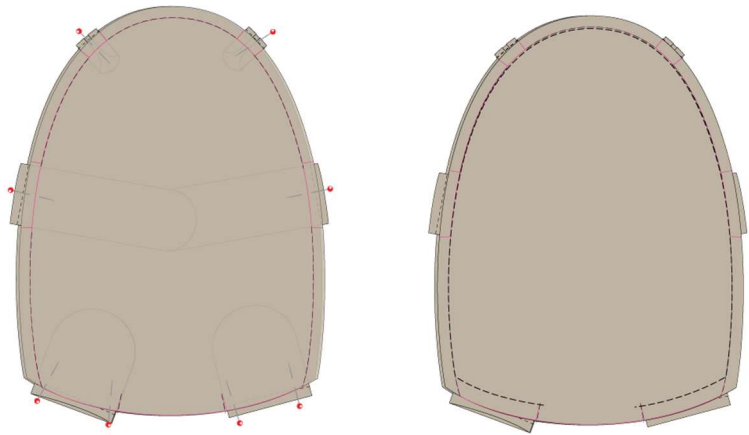


8. The ears are small and need no stuffing. Fold the outer edges of the ears toward the center. Baste to hold the ears in the folded position.

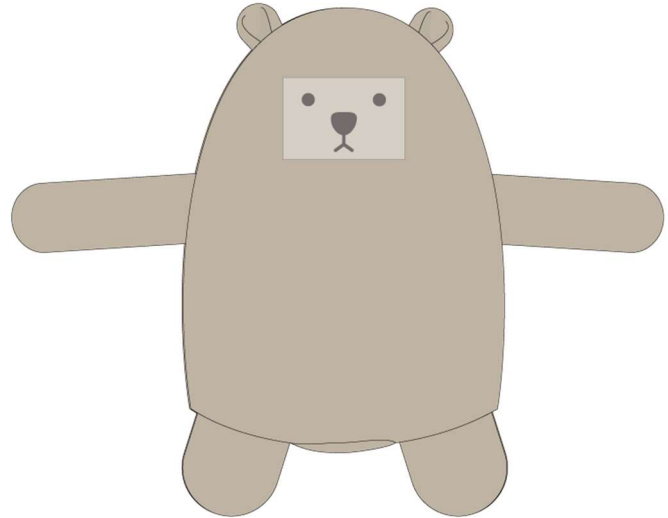


9. With the body piece right sides together, insert the ears, arms and legs inside and push the raw edges through the openings. Pin in place.

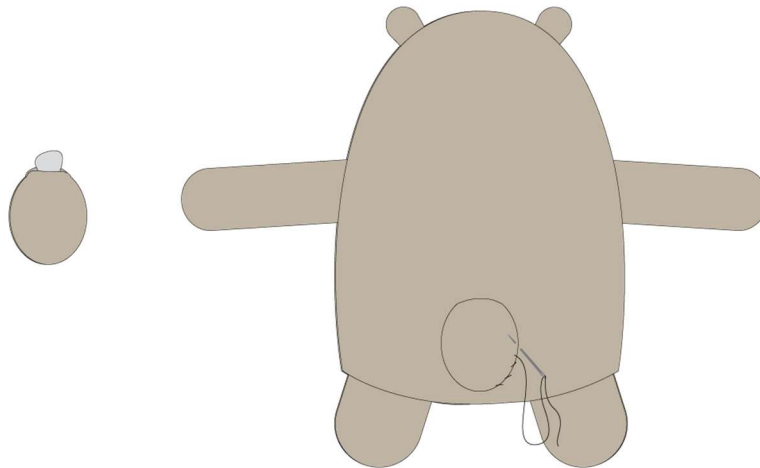
Stitch around the body, leaving an opening for turning. Turn the right side out.



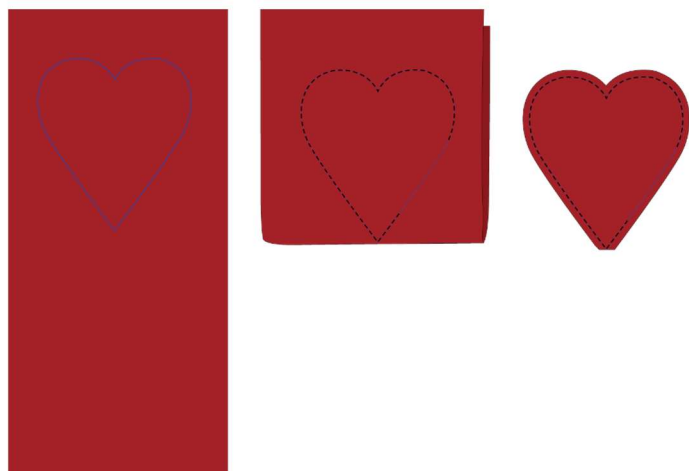
10. Before you stuff the bear, add the vinyl eyes, nose and mouth. Weed the vinyl and position the design on the bear's face. Place a piece of parchment paper on top and use the heat press to apply.
11. Stuff the bear firmly. Use a hand sewing needle and thread to sew the opening closed.



12. Stuff the tail and hand stitch the opening closed. Hand stitch the tail to the bear.



13. Fold the red heart piece as shown, right sides together. Stitch along the drawn line, leaving an opening on the straight edge for turning. Cut around the shape then turn the right side out. Stuff with fiber fill and sew the opening closed.



14. Sew the heart to the bears paws.

