

Doll Shirt



Bring a ragdoll to life with this fun and creative sewing project! Use the MOMENTO™ Craft Cutting Machine to cut the top for this handsome doll.

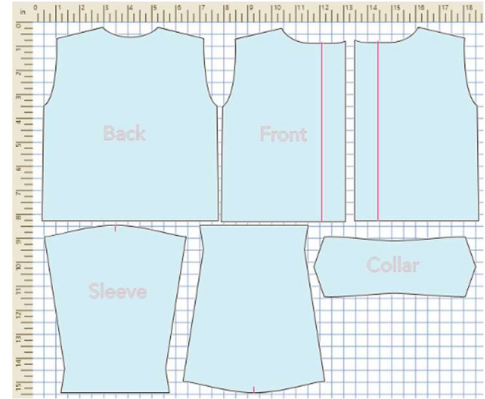
What you need

- SINGER® MOMENTO™ Craft Cutting Machine
- Fabric, Fat Quarter
- Fabric Grip Mat 24" x 24"
- Rotary Blade
- SINGER® MOMENTO™ Heat Removable Pen
- Brayer
- Sewing Machine
- Thread
- Iron and Ironing Board
- Straight pins

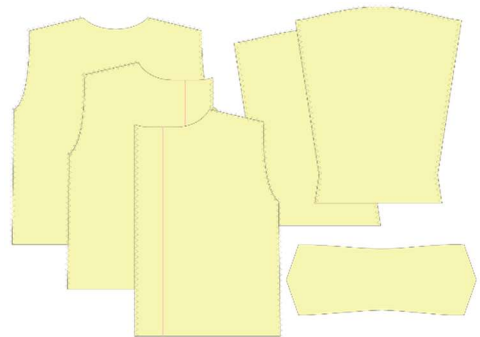
- Hand Sewing Needle
- Buttons

Directions

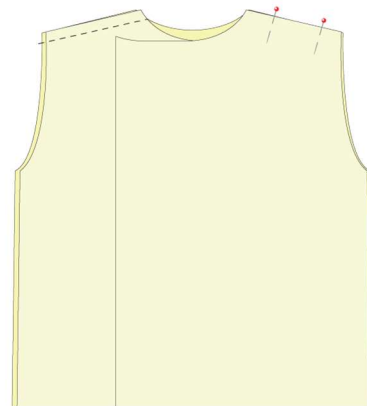
1. **Prepare the Fabric.** Place the fabric onto the mat. Use a Brayer to adhere the fabric to the mat, smoothing out any wrinkles or bubbles.
2. **Cut the Fabric.** Open the project in canvas. Insert the Rotary Blade into the right carriage and the heat removable pen in the left carriage of your cutting machine. Select the correct mat size, material type and material size, in the software. Follow the on-screen steps to cut the fabric.



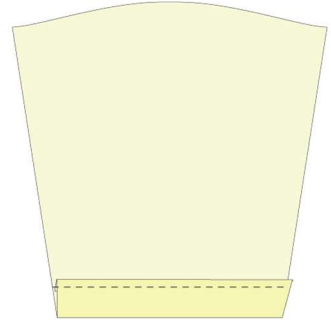
3. **Overcast the Edges.** Set your sewing machine for zigzag stitch and overcast the raw edges. You do not need to overcast the collar, neckline or bottom edges.



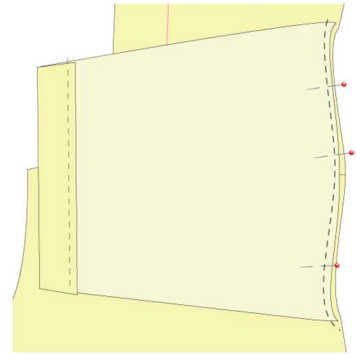
4. **Sew the Shoulder Seam.** Place the shirt back and front pieces right sides together, aligning the shoulder seams. Set your sewing machine to a straight stitch and sew the shoulder seams using a ¼" (6mm) seam allowance.



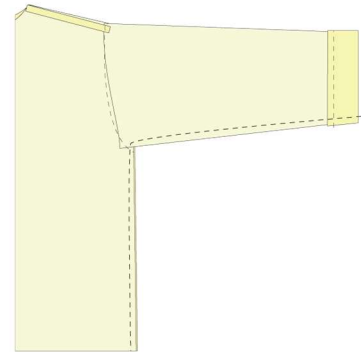
5. **Hem the Sleeves.** Make a double fold to the wrong side and topstitch in place.



6. **Attach the Sleeves.** With right sides together, stitch the sleeve to the armhole, matching the center of the sleeve to the shoulder seam. Press seam toward sleeve.



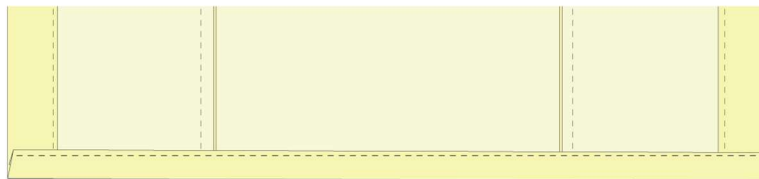
7. **Stitch Front to Back.** With right sides together, stitch underarm and side seams.



8. **Sew the Collar.** Fold the collar in half, right sides together, and stitch along the short edges. Turn it right side out and press. Mark the center of the shirt back and the center of the collar. Pin the collar to the shirt neck, matching the center back marks. Fold the facings to the right side of the shirt. Stitch in place and overcast the edge. Turn the facings to the inside, press, and topstitch in place.



9. **Hem the Shirt.** Make a double fold to the wrong side, press, and topstitch.



10. **Complete Final Touches.** Use a hand sewing needle and thread to attach snap buttons and/or decorative buttons.

