

Girl Doll Jacket



Bring a ragdoll to life with this fun and creative sewing project! Use the MOMENTO™ Craft Cutting Machine to cut the jacket for this cute doll.

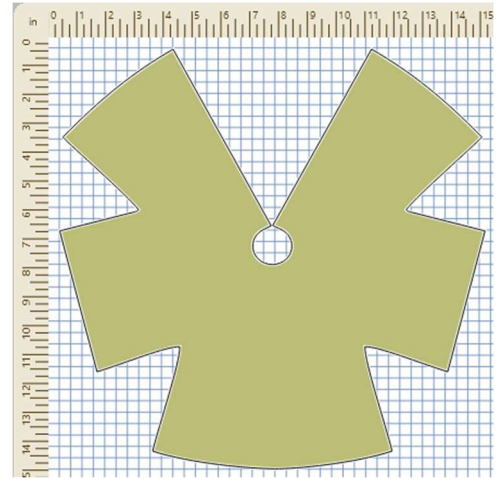
What you need

- SINGER® MOMENTO™ Craft Cutting Machine
- Fabric
- Lining Fabric
- Fabric Grip Mat 24" x 24"
- Rotary Blade
- Brayer
- Sewing Machine
- Thread
- Iron and Ironing Board

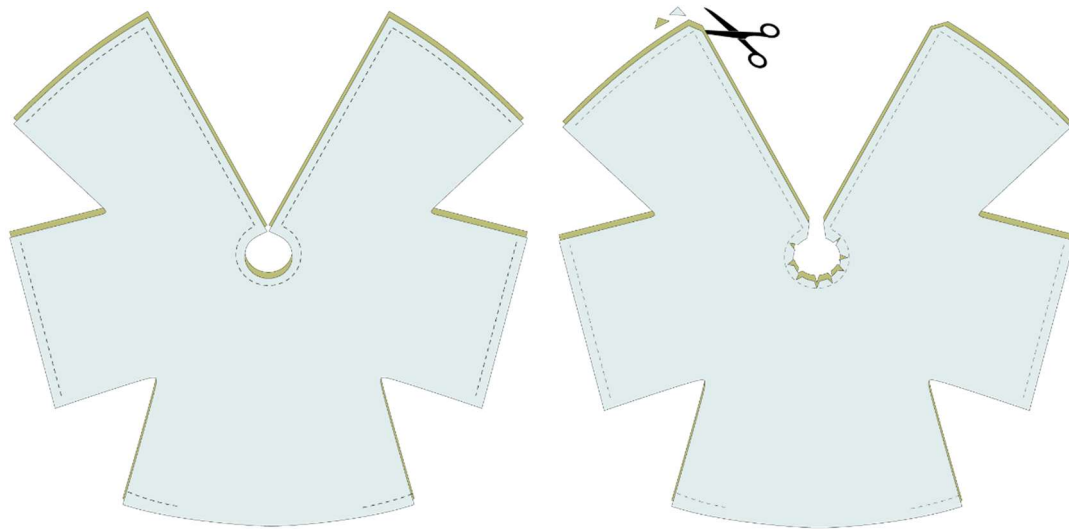
- Straight Pins
- Hand sewing Needle
- Snap button
- Decorative button

Directions

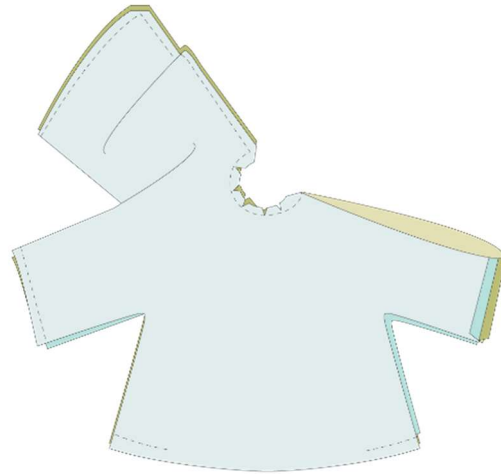
1. **Prepare the Fabric.** Cut the fabric to fit the 24" x 24" mat. Place the fabric onto the mat. Use a Brayer to adhere the fabric to the mat, smoothing out any wrinkles or bubbles.
2. **Cut the Fabric and Lining.** Open the project in canvas. Insert the Rotary Blade into the right carriage of your cutting machine. Select the correct mat size, material type and material size, in the software. Follow the on-screen steps to cut the main fabric. Place the lining fabric onto the mat and repeat the cut in the same manner for the lining fabric.



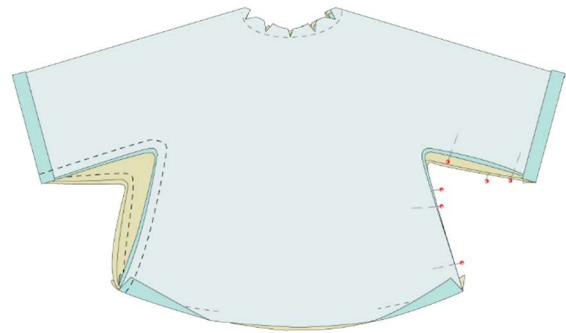
3. **Sew the Main Fabric and Lining Together.** Place the main fabric and lining fabric, right sides together. Pin the layers to hold them in place. Set your sewing machine for straight stitch and sew around the edges using a $\frac{1}{4}$ " (6mm) seam allowance. Leave the side seams and the bottom edge of the back open as shown. Snip the seam allowance at the curved neckline and cut the corners.



4. **Turn the Front Pieces.** Fold the jacket fronts to the inside. Align the under arm and side edges with the right sides together.



5. **Sew the arm and side seams.** Align the seams and open up the seam allowances. Pin and sew the sleeve and side seams. Snip the seam allowances at the curves. Turn the right side out and press.



6. **Complete Final Touches.** Use a hand sewing needle and thread to stitch the opening closed. Sew a snap button to close the jacket and decorate with a decorative button.

