

Girl Rag Doll



Bring a ragdoll to life with this fun and creative sewing project! Using the MOMENTO™ Craft Cutting Machine to cut the pieces and draw the stitch lines. Use the face template to transfer the face, then either use a permanent textile marker or hand embroider the features to give your doll a distinctive personality. Don't stop there—experiment with different hairstyles and accessories to make your ragdoll truly one-of-a-kind! Whether you're making it for yourself or as a heartfelt gift, this ragdoll will be a cherished creation. The finished size of the doll is approximately 22" (55cm) tall.

What you need

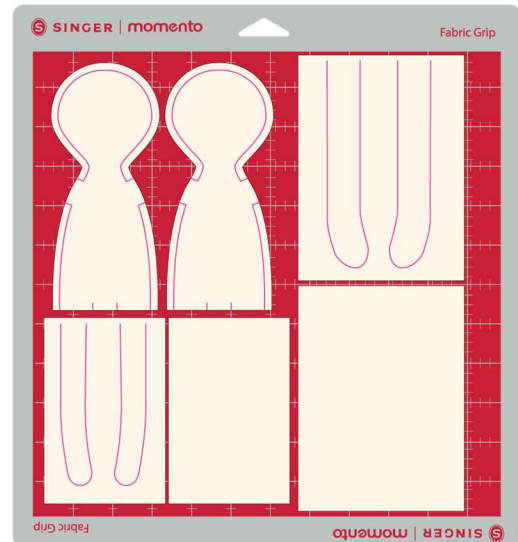
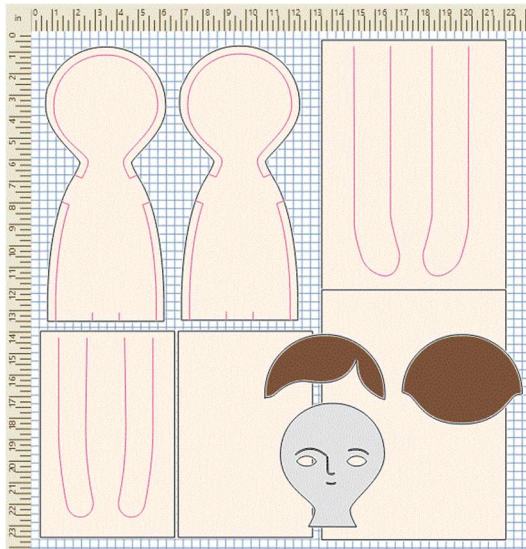
- SINGER® MOMENTO™ Craft Cutting Machine
- Main Fabric for the doll 24" x 24" (60cm x 60cm)
- Fabric for Hair
- Cardstock for Face Template
- Interfacing
- Fabric Grip Mat 24" x 24"

- Light Grip Mat 12" x 12"
- Rotary Blade
- Basic Blade
- SINGER® MOMENTO™ Heat Removable Pen
- Brayer
- Sewing Machine
- Thread
- Iron and Ironing Board
- Pinking Shears
- Temporary Spray Adhesive
- Straight pins
- Hand Sewing Needle
- Fiber Fill
- Permanent Textile Marker
- Cotton Piping Filler Cord or similar

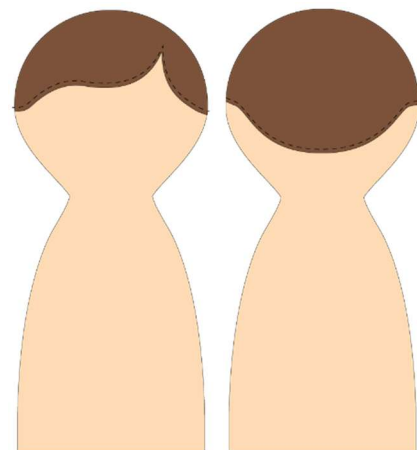
Directions

1. Prepare your fabric. Cut the fabric for the doll to fit the 24" x 24" mat. Cut the interfacing the same size. Use the iron to apply the interfacing to the wrong side of the fabric, following the manufacturer's instructions. Place the fabric, interfacing side up onto your fabric grip mat. Use a Brayer to help adhere the material to the cutting mat, eliminating wrinkles or bubbles.

2. Open the project in canvas. Insert the Rotary Blade into the right carriage and the heat-removable fabric pen in the left. Select the mat size, material and material size. Follow the steps to draw and cut the fabric on your craft cutting machine.

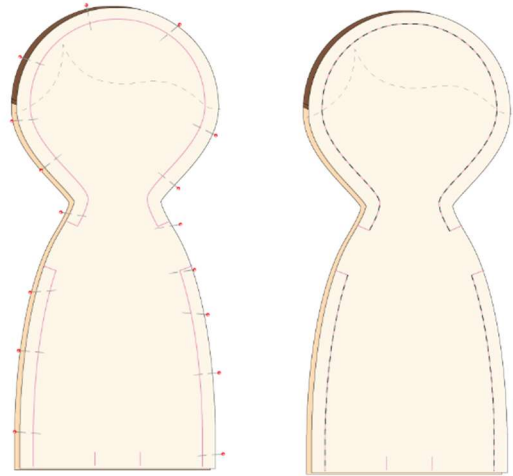


3. Place the fabric for the hair onto your fabric grip mat and follow the steps to cut the material on your craft cutting machine.
4. Place the cardstock on the light grip mat and change to the Basic Blade. Change the inputs for Mat Size, Material and Material Size. Follow the steps to cut the face template on your craft cutting machine.
5. Apply temporary spray adhesive to the back of the hair pieces. Place the hair on the right side of the doll's back and front head. Set your sewing machine for straight stitch and sew along the hairline.

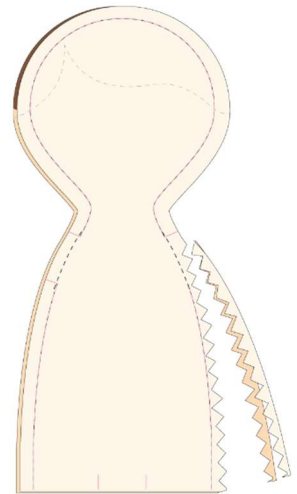


6. Set the body. Place the front and back body pieces, right sides together. Pin and sew around the shape leaving openings for the arms and the bottom edge. Backstitch at the beginning and end of each seam.

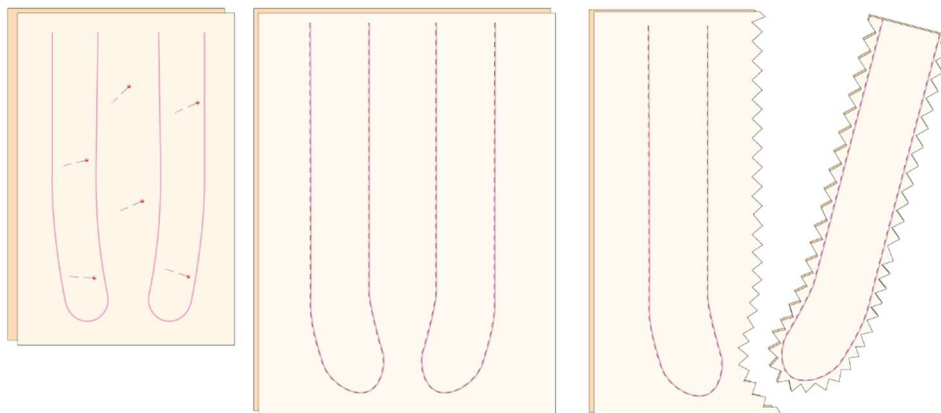
Tip: If the skin color and the color of the hair are much different, sew the head at the edge of the hair, with tread matching the hair. Change to a thread color matching the skin and sew the body.



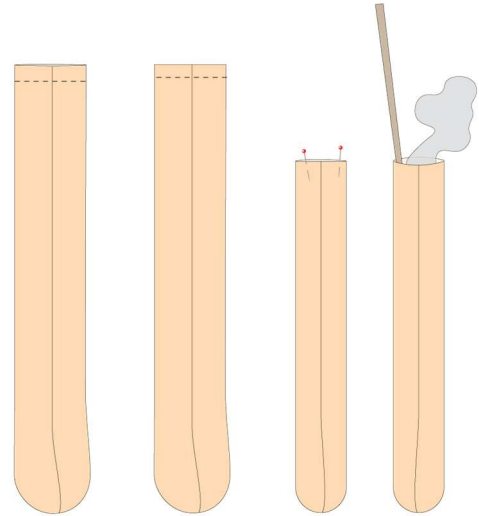
7. Use pinking shears to trim the seam allowance or a pair of regular scissors to snip the curved edges. Turn the body and head right sides out through the opening at the bottom. Use a chopstick to push the fabric out.



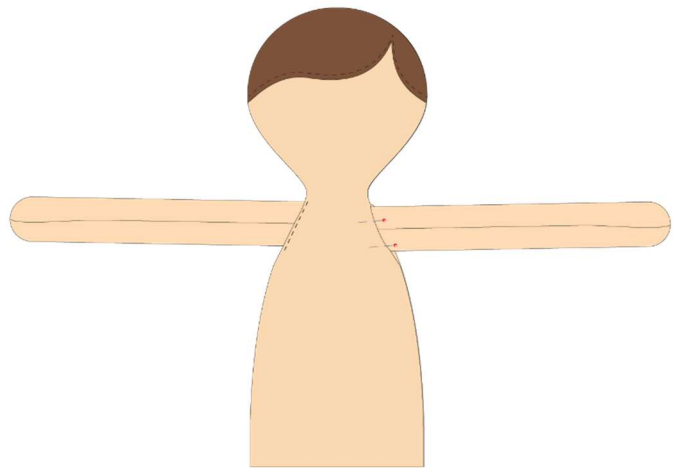
8. Place the fabric with the drawn limb pattern, right sides together with the plain fabric piece. Sew around the arms and legs, leaving the top open to turn the right side out. Backstitch at the beginning and end of each seam. Use your scissors to cut around the arms and legs, approximately 1/4" (6mm) from the seam.



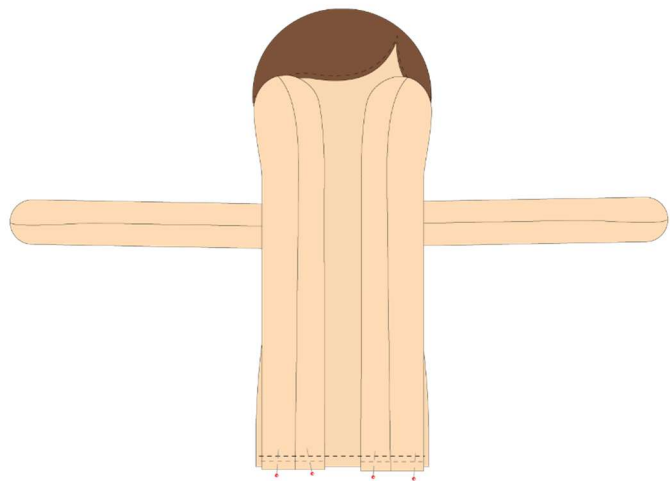
9. Turn the arms and legs right side out. Use a chopstick or similar to push the fabric out. Stuff with fiber fill. Fold the arms and legs with the seams matching on top of each other, pin to hold in place. Set your sewing machine for a long stitch and baste across to hold the stuffing inside.



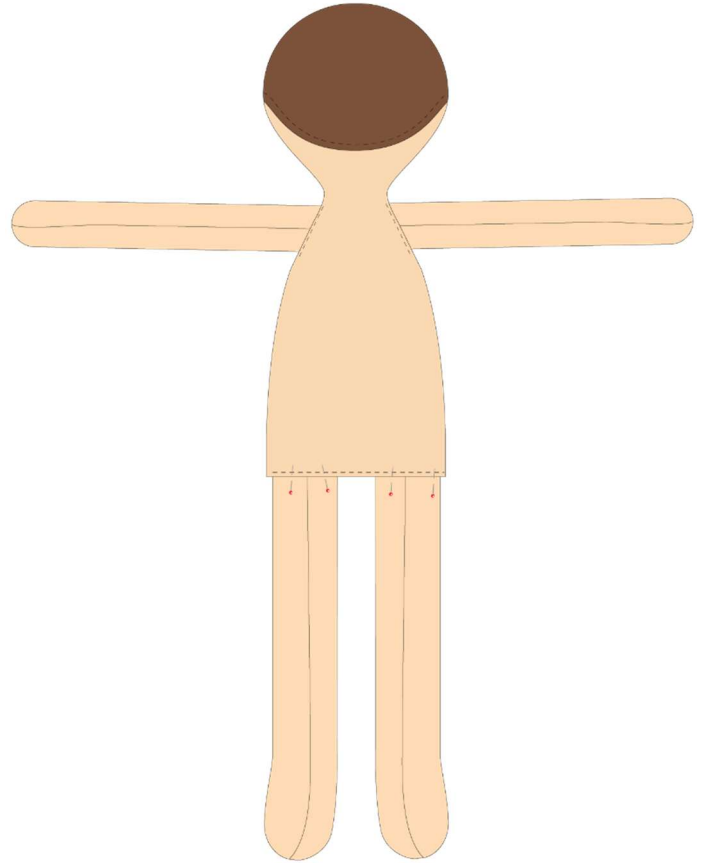
10. Attach the arms to the body. Make sure the seam allowances in the openings for the arms are folded back to the inside of the body. Insert the arms. Pin to hold in place, then topstitch to sew the arms in place.



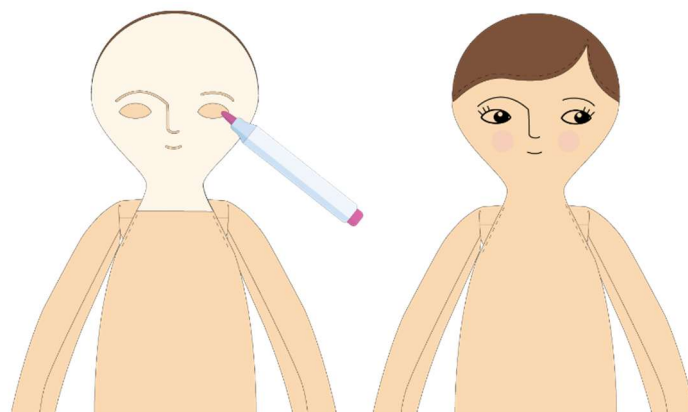
11. Pin the legs to the body front, toes pointing to the doll's face. Sew across, only through the front body piece.



12. Fill the head and body with fiber fill. You need to stuff it quite hard to fill out the wrinkles and to hold the head up. Fold the seam allowance on the body back piece to the inside. Pin then top stitch to close the opening.



13. Creating the face. Place the face template on your doll's face and use a heat removable fabric pen to transfer the position of the eyes, nose and mouth. Use a permanent textile marker to fill in the lines. Add pupils, eyelashes, freckles and blush to the cheeks to create a unique personality.



14. Sew the hair. Cut strips from the hair fabric, 2" (5cm) wide and approximately 30" long. Fold the strips in half lengthwise and sew along the edge to make a tube. Use a chopstick or a tube turner to turn it right side out. To make the hairstyle fuller, thread in a cotton piping filler cord or similar. Start in the middle and roll a bun. Use thread and a hand sewing needle to hold the bun. Repeat the process to make an additional bun and sew on each side of the head. Experiment with different hairstyles to create personalities.

