

Bird Wings Costume



Whether a costume party, trick-or-treat season, or just simple playtime, this costume is sure to please! It is child size and worn as a cape. The “feathers” are made from rows and rows of felt, which are first cut using your crafting machine and then layered onto the base fabric with your sewing machine. The cape is tied in front, so the fit is adjustable. The center back length is 20” (50cm). If desired, this cape coordinates well with our Owl Mask project!

What you need

- Felt Fabric 1.6mm Thick, Dark Brown, 4 pieces 24” x 24” (60cm x 60cm)
- Felt Fabric 1.6mm Thick, Brown, 2 pieces 24” x 24” (60cm x 60cm)
- Felt Fabric 1.6mm Thick, Light Grey, 2 pieces 20” x 20” (50cm x 50cm)
- Fabric Grip Mat 24” x 24
- Rotary Blade
- Brayer
- Twill Tape Ribbon 3/8” Wide 30” (75cm) Long

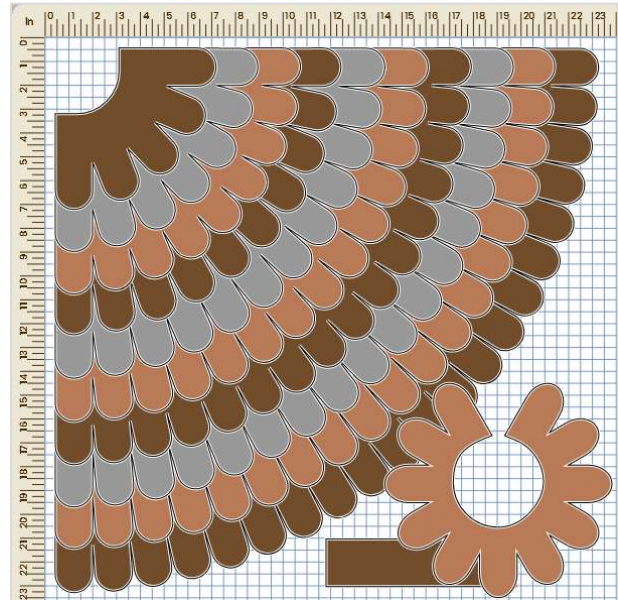
- Sewing Machine
- All Purpose Thread
- Straight Pin
- Painter's Tape (optional)

Directions

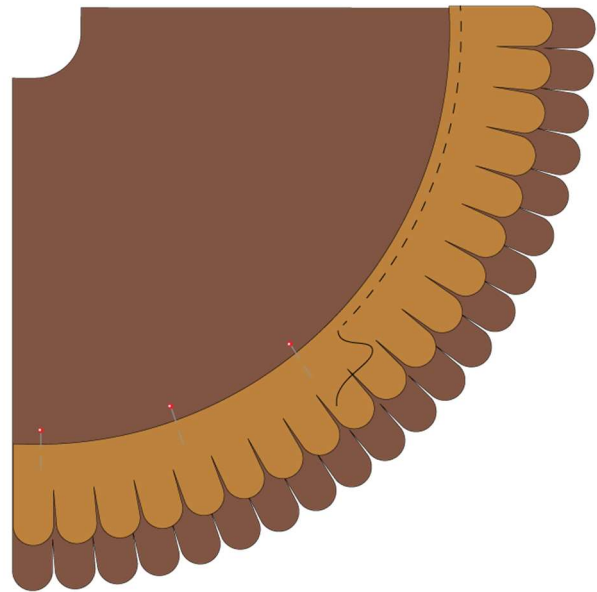
1. Cut the felt fabric to fit the 24" x 24" mat. You will need 4 pieces from the main felt fabric (dark brown) and 2 pieces each from the brown and grey fabric.

2. Open the project in Canvas. Go to the Output Menu and press Send to Machine. Place the felt on your Fabric Grip Mat. Use a Brayer to help adhere the material to the cutting mat, eliminating wrinkles or bubbles. If desired, use painter's tape to help prevent the edges of the felt from moving during the cutting process. Follow the steps to cut the felt on your crafting machine.

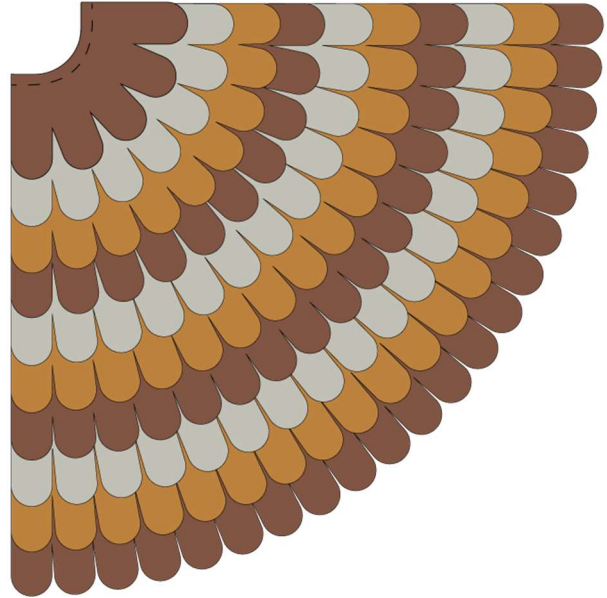
Note: The cut file is for making one wing. Repeat to make two identical wings. There is no need to mirror because it is symmetrical.



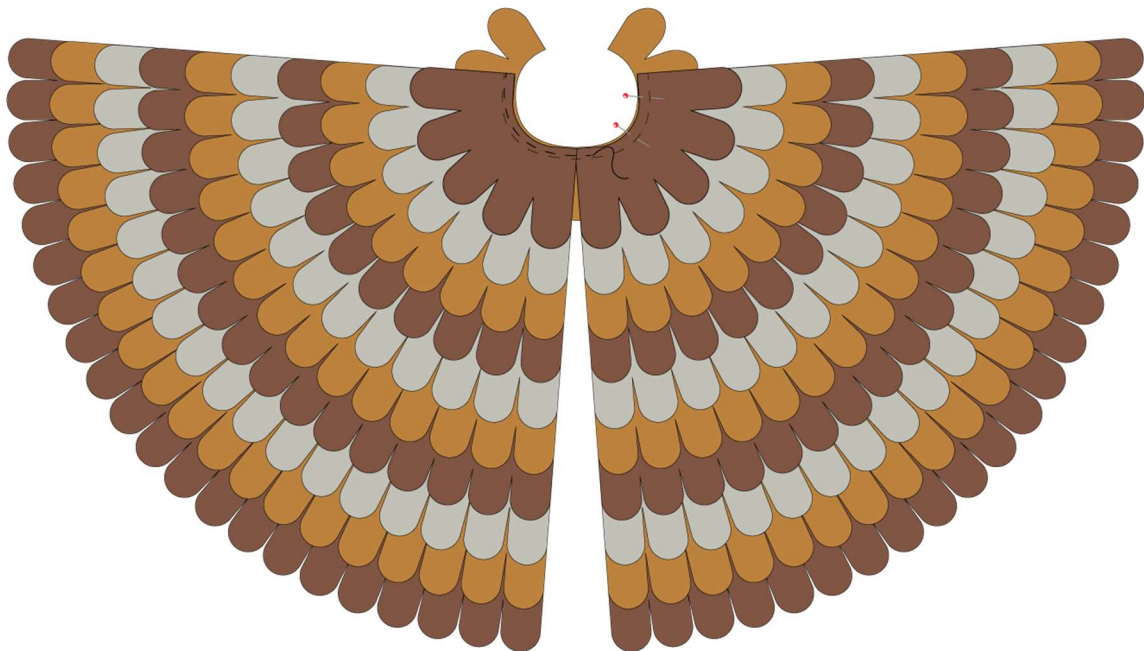
3. Place the first row of feathers on the main wing, lining up the short edges and pin in place. Set your sewing machine for straight stitch and stitch along the top edge of the feathers.



4. Place the second row of feathers, overlapping the first row and stitch in place. Repeat with the remaining rows.
5. Make the other wing the same way.

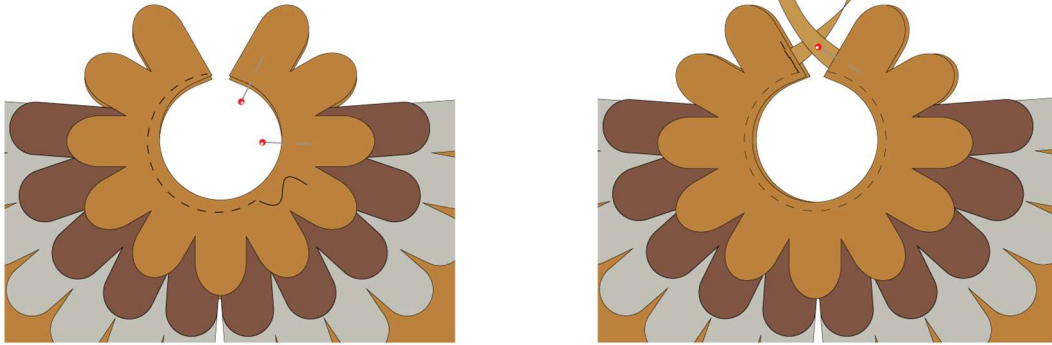


6. Place the wings next to each other. Place one of the collar pieces underneath. The wings should meet at the center back of the collar. Pin in place and stitch along the inner curve of the collar, using $\frac{1}{4}$ " (6mm) seam allowance.



7. Place the top collar piece on the right side of the wings, on top of the under collar. Pin in place and stitch along the inner curve of the collar.

8. Cut the ribbon in half. Pin to the front of the collar, between the two collar layers and stitch in place.



9. Wrist Band: Fold the 2" x 8" (5cm x 20cm) strip in half lengthwise. Stitch along the edge.

10. Place the wristband on the wrong side of the wing, approximately 2" (5cm) from the front edge. Adjust the distance from the bottom edge depending on the child's arm length. Make sure you sew it only to the main wing and not through the feathers.

11. Adjust the length of the wristband loop to fit. Sew in place. Cut the excess off. Repeat on the other side.

