

# Turtle Stool Cushion



Add some fun to the playroom with this adorable, turtle-inspired stool cushion. The top of the cushion features a series of hexagon shapes which are sewn together and then applied to the top of the turtle body. The bottom side of the turtle body is made using non-slip fabric so that it has grip. The materials are cut using your crafting machine, and the project is assembled using your sewing machine, plus a little bit of hand sewing. The finished width of the main turtle body area is 10" to fit a stool top that is 10", so adjust the size as needed for your stool.

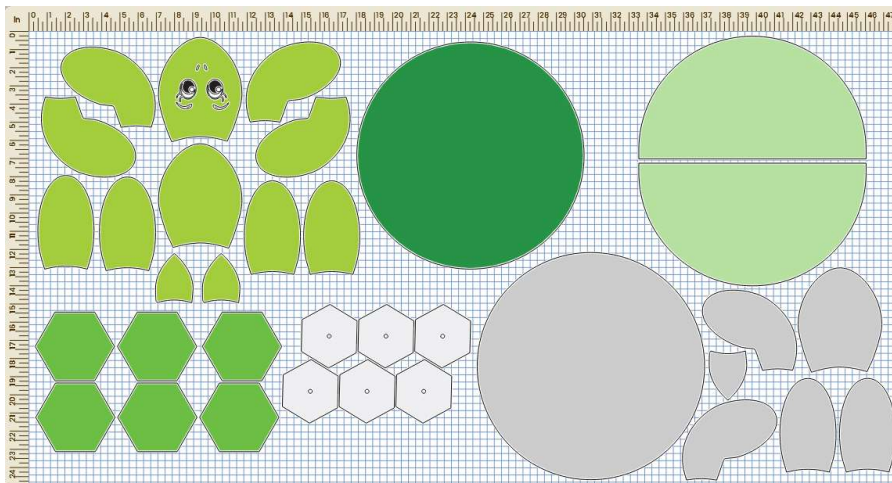
## What you need

- Round Stool – 10" wide x 11" high
- Dark Green Fabric – for main turtle body topside
- Non-Slip Fabric – for main turtle body bottom side
- Medium Green Fabric – for turtle head, feet and tail
- Print Fabric – for hexagon embellishment on turtle top
- Fusible Batting
- Low-Loft Quilt Batting (optional)

- Heat Transfer Vinyl (black, white) – for turtle eyes
- White Cardstock – for hexagon templates
- Fabric Grip Mat 24" x 24"
- Light Grip Mat 12" x 12"
- Heat Press
- Rotary Blade
- Basic Blade
- Brayer
- Weeding Tool
- Sewing Machine
- Quarter-Inch Foot
- Open Toe Foot
- Thread
- Hand Sewing Needle
- Straight Pins
- Parchment Paper

## Directions

1. Open the project in Canvas. Follow the steps to cut all the various elements. When finished, you should have the following, as listed below:



*Note: The top of the turtle body is embellished with a “ring” of hexagon shapes. The hole that is cut in the center of each hexagon cardstock template is there to make it easy to remove the template from the fabric when finished using it. The paper templates can be used over again for another project!*

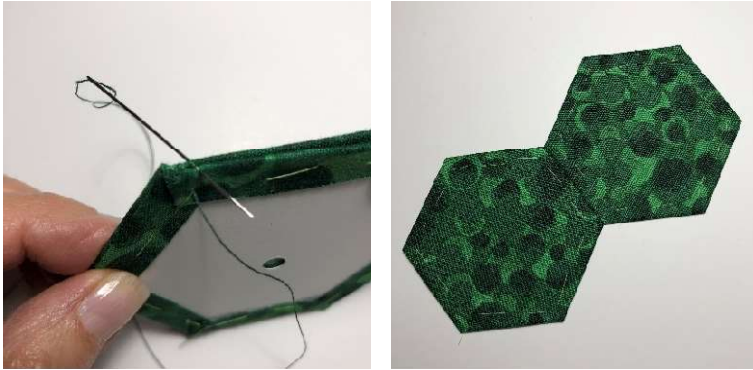
- 6 Hexagon paper templates (created from the cardstock)
- 6 Hexagon fabrics, cut from print fabric
- 1 Round fabric for turtle main body top
- 1 Round fabric (optional, if you want a little bit more padding)
- 4 Fabric Pieces for front feet
- 4 Fabric Pieces for back feet
- 2 Fabric Pieces for tail
- 2 Fabric Pieces for head
- 2 Half-circle cuts from non-slip fabric for turtle main body bottom
- Fusible Batting: 1 circle, 2 front feet, 2 back feet, 1 head, 1 tail
- White and black heat transfer vinyl cuts (for the turtle eyes)

*Note: When using more than one material, check all settings and customize inputs for your mat size, material type, material size, and arrangement of pieces before selecting next to begin cutting each layer.*

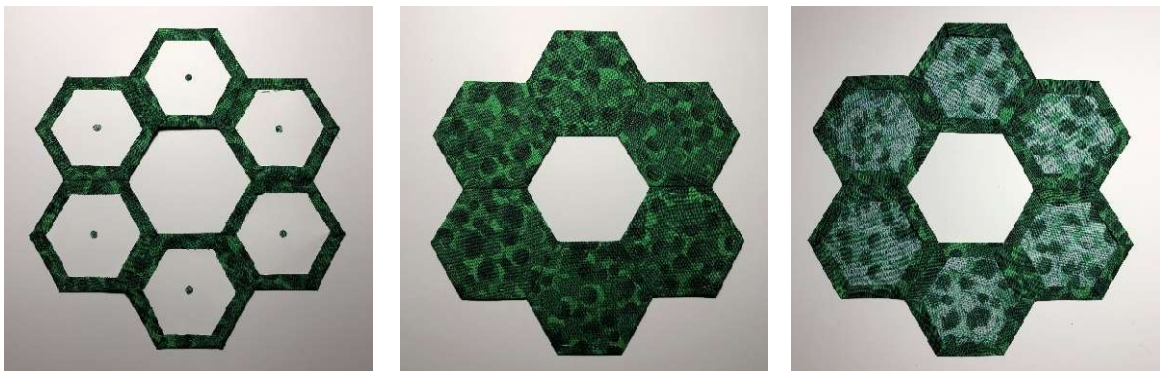
2. Apply the fusible batting to the wrong side of the round, main turtle body top fabric, following the fusible batting manufacturer's recommendations for application. Set aside for now to prepare the embellishment for the turtle body top.
3. The hexagon fabric shapes have a seam allowance on all 6 sides that is  $\frac{3}{8}$ " (10mm). Start by placing one template onto the wrong side of one fabric. Fold one seam allowance over and finger press. Use a hand sewing needle to loosely baste the seam allowance, stitching through the fabric and template. Fold the next seam allowance over, finger press and baste in place. Continue until all sides have been basted, for all six templates.



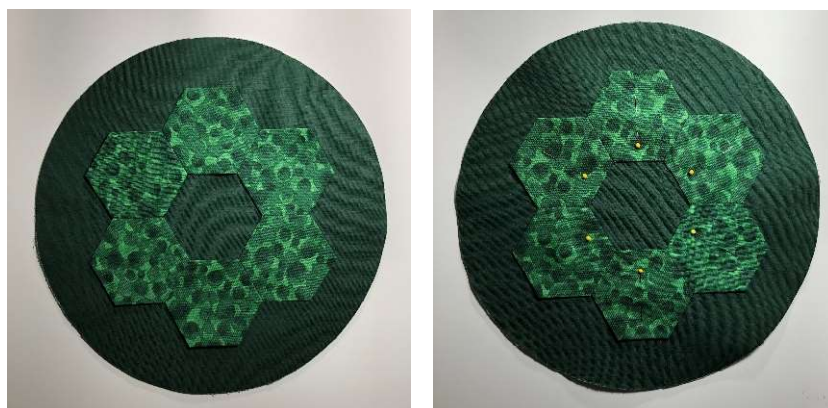
4. Press using a dry iron. Leave the templates inside the fabrics. Place two hexagons together along one side, right sides facing. Use a hand sewing needle to stitch together along one edge only, catching only a very slight amount of fabric with the needle and taking care not to stitch through the paper – stitch very near the edge, just enough to sew the two together.



5. Repeat until all hexagons are stitched together, forming a ring. Press. Remove the basting stitches from all six joined hexagon pieces. Once basting stitches are removed, you can remove the paper templates. The hole in the center of the template can be used to grab the paper and pull it out from behind the fabric.



6. Position the hexagon ring in the center of the turtle body top fabric, then pin in place.

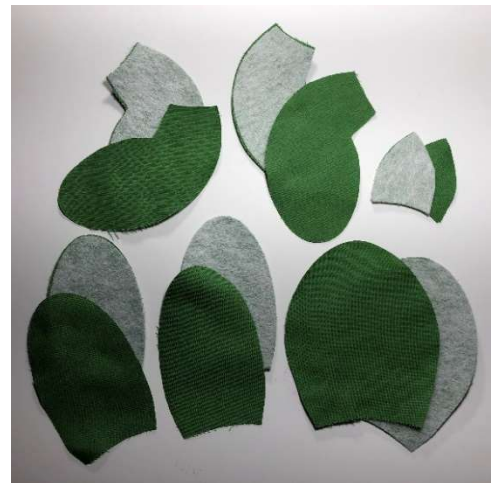




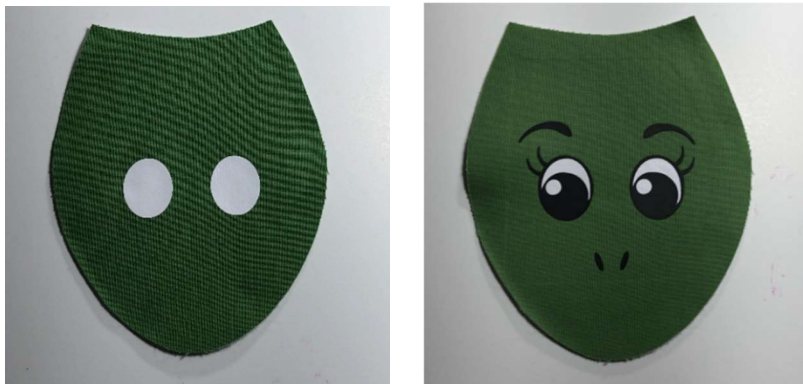
- Use a sewing machine to stitch around the hexagons, both inside and outside the "ring". It can be helpful to use an Open Toe Foot on the sewing machine because it offers a clear view of the stitching area. For our project, a decorative stitch has been used, with the stitch width set at 3.5mm and the stitch length set at 3.0mm. Set this piece aside for now.



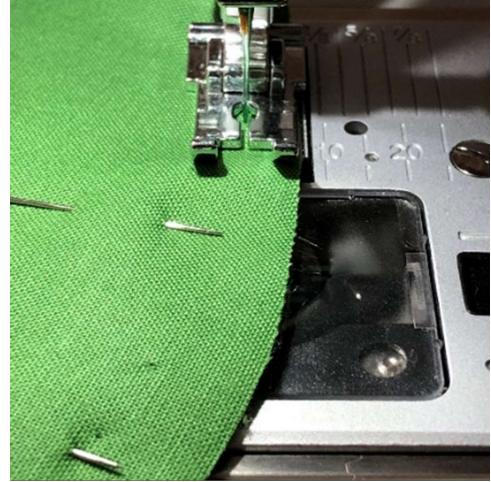
- Apply the remaining pieces of the fusible batting to the wrong side of the following parts: 1 head fabric piece, 1 tail fabric, 1 left front foot, 1 right front foot, 1 left back foot, and 1 right back foot. You will have one fused unit, with a corresponding un-fused fabric piece. Set all items aside for now, to prepare the face for the turtle.



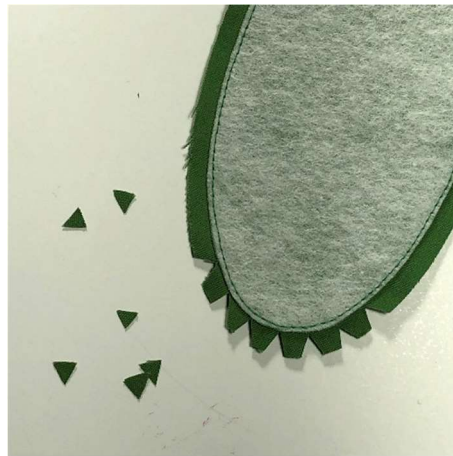
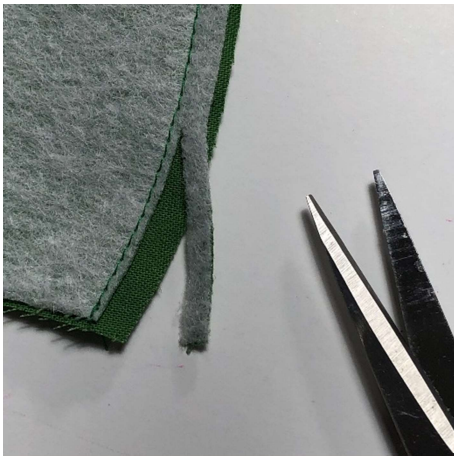
- To make the turtle's face, first use the Weeding Tool to weed the black and white vinyl cuts which will become the eyes on the turtle head section. Take the fused turtle head fabric piece and place it on a flat surface, fabric side up. Place parchment paper on top of the turtle head. Use a Heat Press to apply the vinyl to create the eyes.



10. Pin all the fused pieces to their corresponding unfused fabric piece, right sides together. Attach the Quarter Inch Foot to the machine, which will make it easy to sew around the head, feet and tail using a  $\frac{1}{4}$ " seam allowance. Set the machine for straight stitch, with a stitch length setting of 2.5mm.



11. Stitch around the head, front feet, back feet and tail. Leave the "ends" of each unit unstitched so that you can turn them right side out after stitching. (The "end" is the part that will be pinned to the main turtle body piece, later.) Trim away the excess seam allowance that has the batting on it. Also, clip corners and curves. This will help reduce bulk when the pieces are turned right side out.





12. Turn each stitched unit right side out through the opening at the end, then press. It is recommended to baste across the open end of each piece, which will help prevent shifting when the pieces are attached to the turtle body. Basting can be done by machine or by using a hand sewing needle.



13. Prepare the bottom part (the “belly”) of the turtle next. Pin the two half-circles of the non-slip fabric together, with right sides facing. Stitch the seam, leaving an opening about 5” wide for turning the turtle right side out. Finger press the seam – don’t use an iron because it will damage the non-slip fabric.



14. Before attaching the feet, head and tail, if desired, sew rows of stitching on the front and back feet for an added touch! You can use a manual removable fabric marking tool to draw stitching guidelines, if desired.



15. Arrange the turtle head, feet and tail pieces onto the main turtle body front, making sure that right sides are facing. Baste in place to help prevent shifting.



16. If you are adding the optional layer of additional batting, start by placing it on a flat surface. Place the turtle body top piece over the batting, with the right side facing up. Now place the main turtle body bottom piece on top, with right side facing down. Pin in place. Attach the all-purpose presser foot to the machine. Stitch all around the turtle body, through all layers, using a  $\frac{1}{2}$ " seam allowance.



17. Clip the curves all around the turtle body, which will help the round seam curve nicely and lay flat. Turn the turtle right side out. Press carefully from the top side of the project, taking care not to touch the non-slip fabric with the iron. Hand-sew the opening on the bottom side closed to finish.



