

Christmas Stocking



Create a personalized holiday stocking for everyone in your household! Add a name or a monogram with simple appliques. The stocking and the applique letters are all cut using your crafting machine, then assembled using your sewing machine. The finished size of the stocking is approximately 16" (40cm) tall.

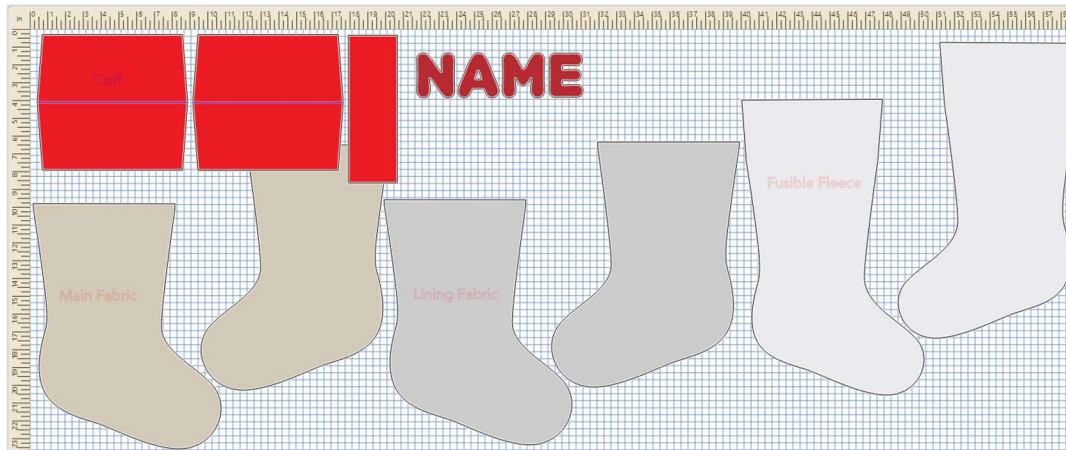
What you need

- Cotton Fabric for Main Stocking – ½ yard (50cm)
- Cotton Fabric for Lining – ½ yard (50cm)
- Cotton Fabric for Cuff – ¼ yard (25cm)
- Scraps of Fabric for Name Appliques
- Paper Backed Fusible Web
- Fusible Fleece
- Tear-Away Stabilizer
- Fabric Grip Mat 24" x 24"
- Rotary Blade

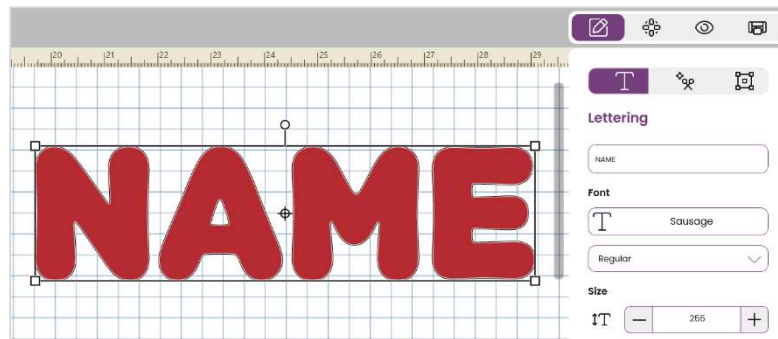
- SINGER® momento™ Water-Soluble Fabric Pen
- Brayer
- Iron and Ironing Board
- Sewing Machine
- Thread
- Straight Pins
- Scissors

Directions

1. Open the project in Canvas.



2. Click on the Name layer and type in the name you want to use. Adjust the size if necessary. Change the color of some letters if you want to cut the letters from different fabrics.

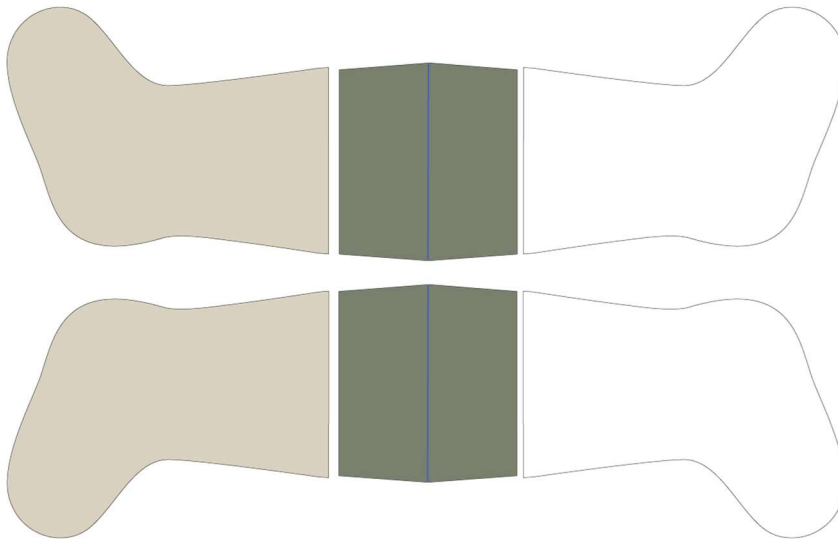


3. Cut a scrap fabric piece large enough to fit the name appliques. Apply the paper backed fusible web to the wrong side of the fabric, following the manufacturer's instructions.
4. Go to the Output Menu and press Send to Machine. Place the main fabric on the Fabric Grip Mat. Use a Brayer to help adhere the material to the cutting mat, eliminating wrinkles or bubbles. Insert the Rotary Blade and follow the steps to cut the fabric on your crafting machine.

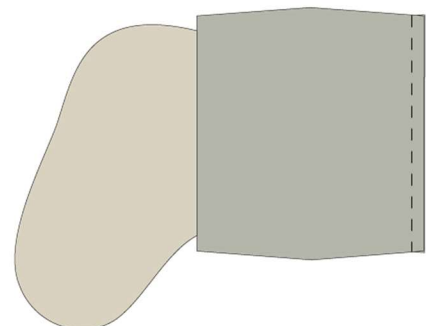
5. Place the lining fabric on the mat and follow the steps to cut the lining on your crafting machine.
6. Place the fabric for the cuff on the mat. Place the Water-Soluble Fabric Pen into the left carriage and follow the steps to draw and cut the material.
7. Remove the paper backing from the fabric with the fusible web. Place the fabric on the mat with the web facing down and follow the steps to cut the name applique.

Note: When using more than one material, check all settings and customize inputs for your mat size, material type, material size, and arrangement of pieces before selecting next to begin cutting each layer.

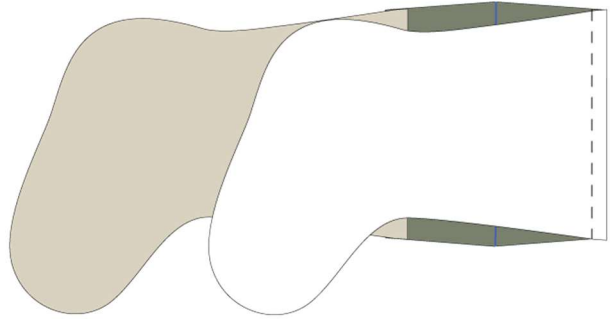
8. Place the fusible fleece on the mat and follow the steps to cut the material on your crafting machine.
9. Arrange your pieces to make the assembly easy.



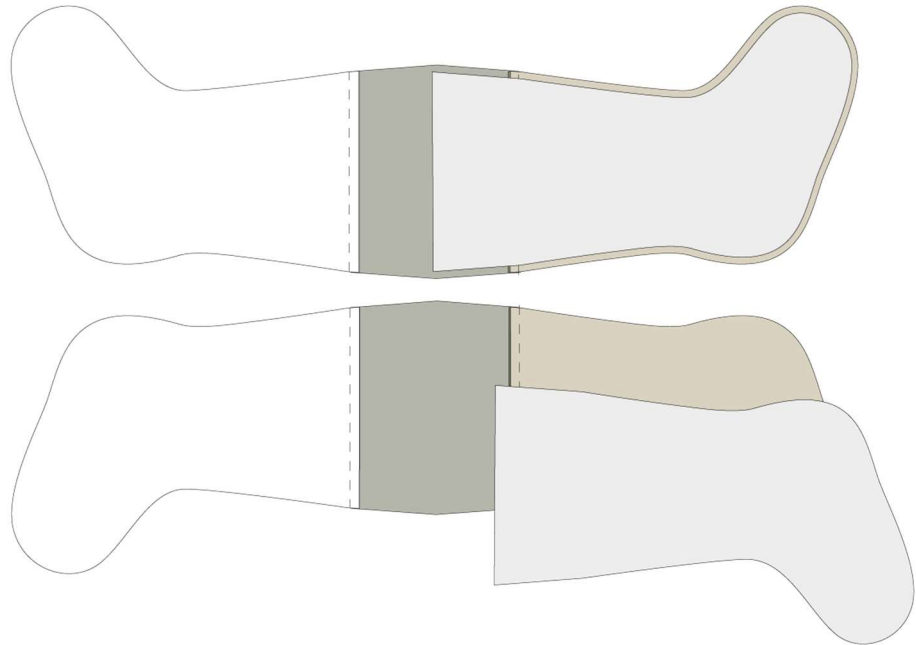
10. Place one of the main outer pieces on a flat surface and place the cuff on top, right sides together. Stitch using a $\frac{3}{8}$ " (1 cm) seam allowance.



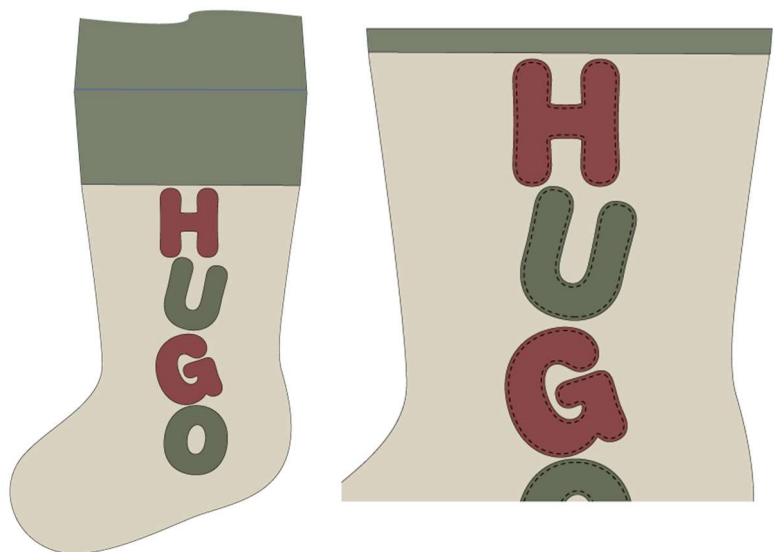
11. Place the other end of the cuff, right sides together with the lining. Stitch using $\frac{3}{8}$ " (1 cm) seam allowance.
12. Repeat with the other set of pieces. Press the seam allowances towards the cuff.



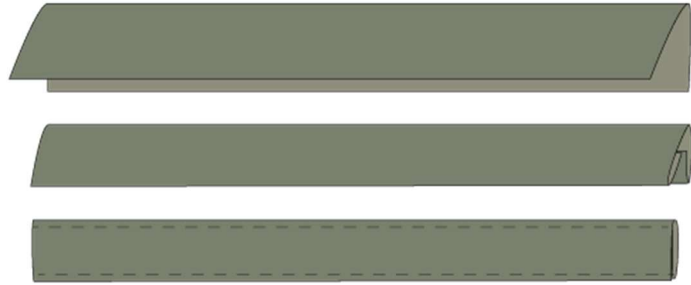
13. Apply the fusible fleece to the back of the main fabric and cuff, following the manufacturer's instructions.



14. Arrange the letters appliques for the name on the front of the stocking and fuse in place. Place a piece of tear-away stabilizer underneath the material and use a straight stitch or zigzag to sew the appliques to the stocking. Remove the tear-away stabilizer.



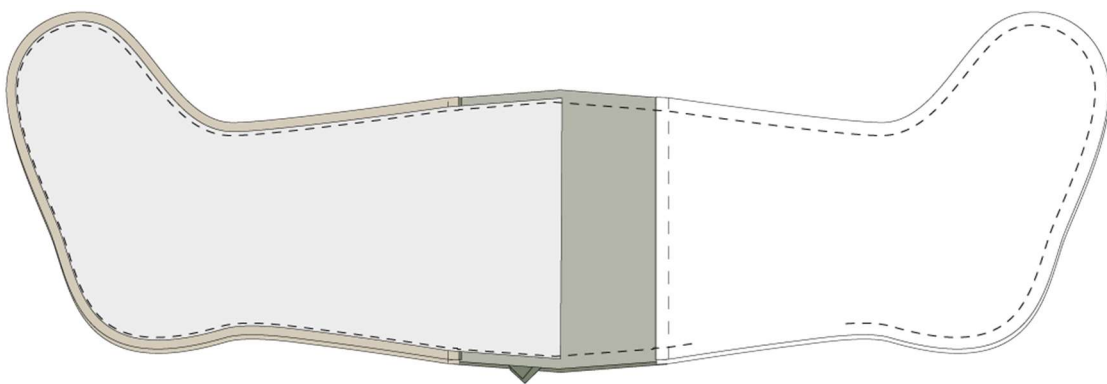
15. Hanging Loop: Fold the rectangle piece in half lengthwise. Fold the raw edges towards the center and press. Stitch along both sides of the strap.



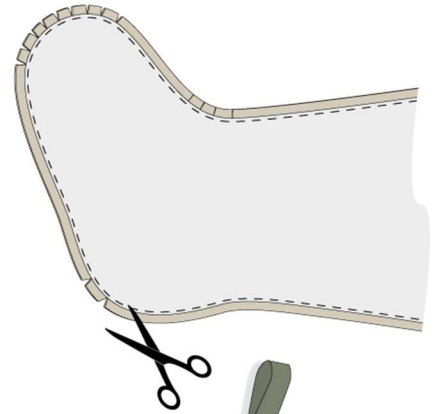
16. Fold the strap in half, forming the loop. Place the two ends at an angle on the edge, under the cuff fold line, as shown. Stitch in place.



17. Place the two stocking pieces right sides together and sew around the perimeter, using a $\frac{3}{8}$ " (1 cm) seam allowance. Leave an opening for turning on the back seam of the lining.



18. Trim the seam allowance; Clip the inner curves and notch out, taking care not to snip into stitches.



19. Turn the right side out and press. Sew the opening in the lining closed. Tuck the lining into the main stocking and press again.

