

Summer Handbag



This handbag is a perfect addition to your summer accessory collection. Both the bag and the flower embellishment are made from linen, providing a light, fresh look that is perfect for the season. All the pieces are cut using your crafting machine, then assembled using a combination of machine and hand sewing.

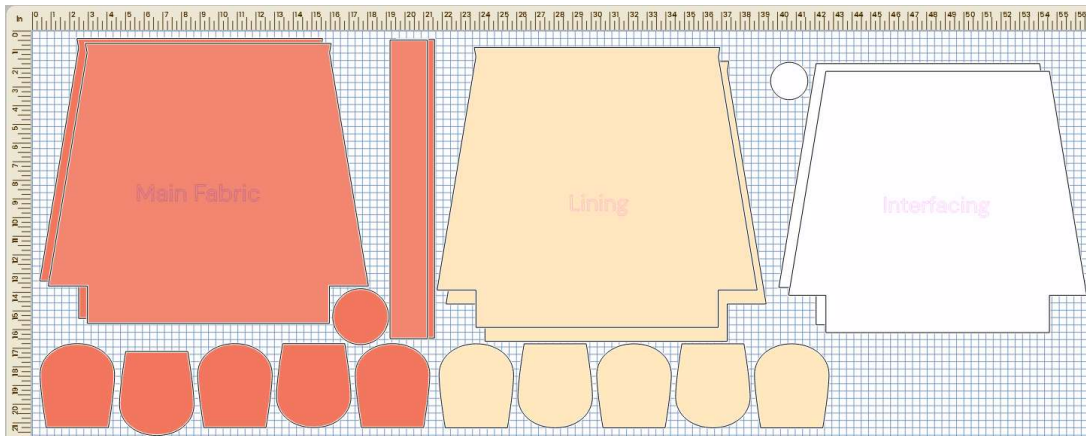
What you need

- 1¼ Yard (1.15m) Medium Weight Linen Fabric (for main handbag and flower)
- ½ Yard (0.5m) Quilting Cotton (for handbag lining and flower petals lining)
- 1 Yard (1m) Fusible Interfacing (for main handbag front & back fabrics)
- Ring-style Purse Handles (one pair)
- One 1-7/8" Button Cover Set (for flower center)
- Scrap of Buckram or Canvas (approximately 2½" or 6.5cm for flower base)
- Fabric Grip Mat 24" x 24"
- Rotary Blade

- Brayer
- Sewing Machine
- Quarter-Inch Foot
- Zipper Foot
- Thread
- Removable Fabric Marking Tool (manual, for tracing around purse handle)
- Hand Sewing Needle

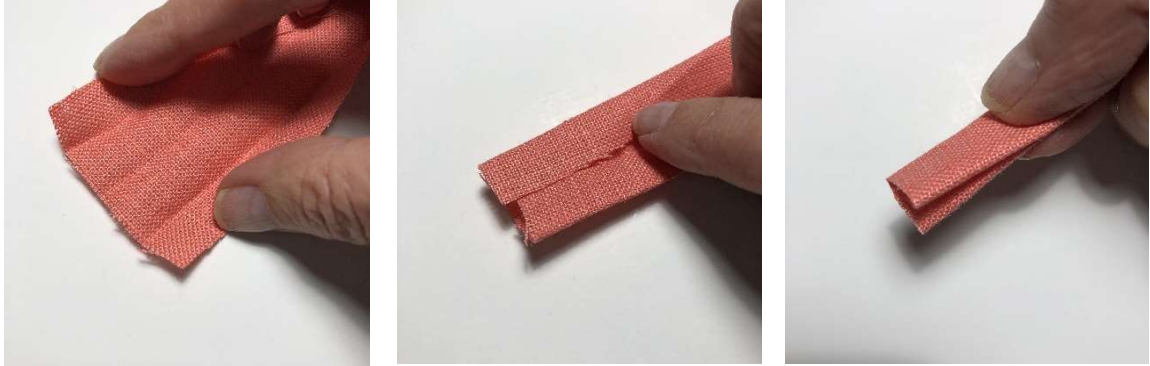
Directions

1. Open the project in Canvas. Go to the Output Menu and press Send to Machine.



2. Place the main fabric on your 24" x 24" Fabric Grip Mat. The grain of the fabric should run in the same direction as the grid on the mat. Use a Brayer to help adhere the fabric to the cutting mat, eliminating wrinkles or bubbles. The following pieces are cut from the main fabric: two bag pieces, five flower petals, two rectangles for creating handle loops and one button cover.
3. Place the lining fabric on the mat and follow the steps to cut the following pieces from lining fabric: two bag pieces and five flower petals.
4. Place the interfacing on the mat and follow the steps to cut the following pieces from interfacing: two bag pieces and one button cover.

5. Start by first preparing the fabric “loops” for the carry handles. You have two 2” (5cm) wide fabric strips that were cut from the main bag fabric. Fold each of them in half lengthwise and press, then bring the raw edges to the center, fold and press again. You should have 2 strips that are ½” (12mm) wide.



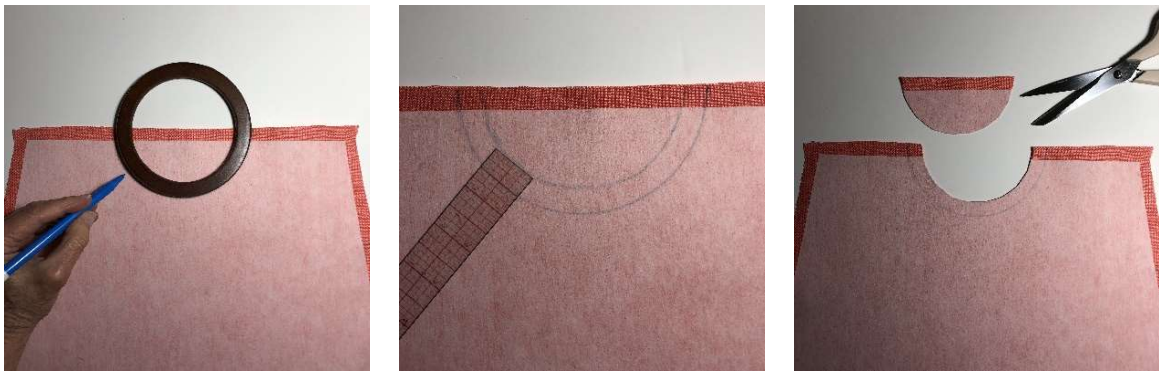
6. Set the sewing machine for straight stitch, with a stitch length of about 2.5mm. Sew along each side of the “loop” fabric strips.



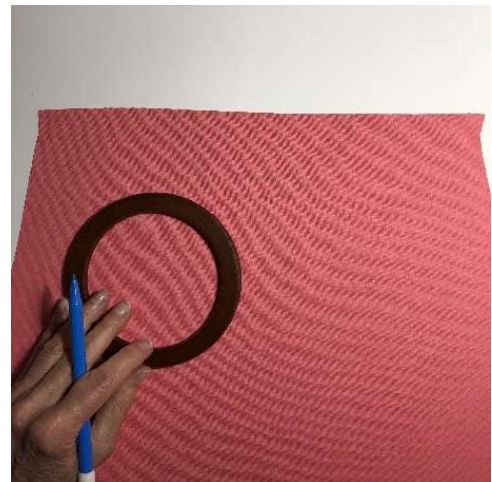
7. The 2 strips need to be cut so that you have 8 pieces. But before you cut, take the end of one strip and wrap it around one of the purchased handles to check for size, keeping in mind that you need extra length which will be used when attaching them to the bag later. This step is important because not all purchased bag handles are alike – you want to cut them in a length to fit the handles you are using for your bag. Determine the length needed for one loop, then cut all 8. Set them aside for now.



8. Apply the fusible interfacing to the main fabric front and back pieces, following the manufacturer's recommendations. You will notice that the interfacing was cut smaller than the main fabric pieces, so that the interfacing is not included in the seam allowance, reducing bulk in the seams.
9. The next step is to mark the bag for the handle "cut outs". This is done manually, rather than as a preset cut on your crafting machine, because not all purse handle hardware is the same size. Therefore, the cut out needs to be made specifically for the handles you are using. Place one handle on the wrong side of one main bag section with the halfway point of the handle aligned with the raw edge of the fabric. Use a fabric marking tool to trace the handle onto the wrong side. Remove the handle, then add a $\frac{1}{2}$ " (12mm) seam allowance above the traced line. Cut out a semi-circle section along the drawn seam allowance line. Repeat this for the other main bag section.

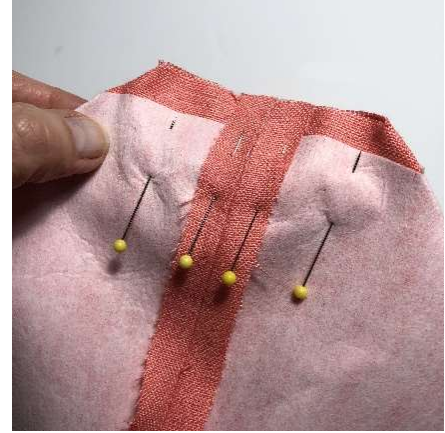


10. Do the same markings for the curves on both lining pieces, marking on the wrong side of the fabric. Trim curves as you did for the main bag pieces.



11. Pin the main bag front and back together, right sides facing. Stitch the seam at each side as well as the seam across the bottom using a $\frac{1}{2}$ " (12mm) seam allowance. Press all seams open.

12. Bring the seam allowances at each of the bottom "corners" together, then pin. Stitch using a $\frac{1}{2}$ " (12mm) seam allowance. For added stability, add a second row of stitching at each corner, sewing within the seam allowance.



13. Turn the main bag right side out, then set it aside for now to sew the lining.
14. Pin the lining front and back together, right sides facing. Stitch along the bottom and along one side using a $\frac{1}{2}$ " (12mm) seam allowance. At the other side, sew a seam but leave an opening about 5" (12.7cm) long – this will be used later for turning the bag right side out when the main bag and lining are joined together. Press seams open.
15. Bring the seam allowances at each of the corners of the lining together, then pin. Stitch using a $\frac{1}{2}$ " (12mm) seam allowance.



16. Mark the wrong side of each lining section with four evenly spaced "openings" within the curved section. The four openings should be $\frac{5}{8}$ " (16mm) each to accommodate your $\frac{1}{2}$ " (12mm) handle loops. The markings indicate where to start and stop stitching, leaving openings for inserting the loops prepared earlier.



17. Pin the lining and main bag together with right sides facing. Stitch around the top of the bag leaving the 5/8" (16mm) openings that you marked free from stitching. When finished, clip curves and corners. Turn the bag right side out through the 5" (12.7cm) opening in the lining seam. Press around the top of the bag.



18. You're ready now to attach the purchased handles using your fabric loops. Place four of the strap pieces around each handle and then tuck the raw ends of each into the 5/8" (16mm) openings in the curved section of the bag. Pin in place. Use a hand sewing needle to baste the loops in place. Attach the Zipper Foot to the machine to topstitch around the top of the bag. This will secure the handles and loops securely in place.



19. Use a hand sewing needle to stitch the opening in the lining closed. Set the bag aside now to prepare the flower embellishment.

20. Pin the 5 petal fronts and 5 petal linings together with right sides facing. Attach the Quarter-Inch foot to the machine. Set the machine for straight stitch in center needle position. Sew around each petal, leaving the "bottom end" of each petal free.



21. Clip the corners, then turn the petals right side out and press. Sew along the open end of each petal.



22. Fold each petal over, creating a small “pleat”. Baste the end of the fold area to keep the petal’s shape. Repeat for all 5 petals.



23. Place a small scrap of buckram or canvas onto a flat surface, to be used as a base for stitching the petals together. Arrange the petals as desired, pin them in place and then sew them to the foundation by hand.



24. The flower center is made by covering a self-covered button. Place the button cover fabric onto a flat surface, then place the small, round interfacing piece onto the wrong side of the fabric to help prevent the shiny surface of the button cover from showing through on the front side. Follow the instructions from the button cover kit to secure the fabric onto the button.



25. Hand sew the covered button over the center of the flower petals. Now place the flower unit onto the bag front. Hand sew the flower unit to secure it onto the bag to finish.

