

Bucket Hat



The bucket hat is a classic “nineties” look for men and women alike. Make one for yourself using your craft cutting machine. The project is editable so you can personalize it with your own birth year! Use denim fabric for a casual, versatile look. Sew the hat using your sewing machine. Wear the brim down or flip it up. This hat is “one size fits most”.

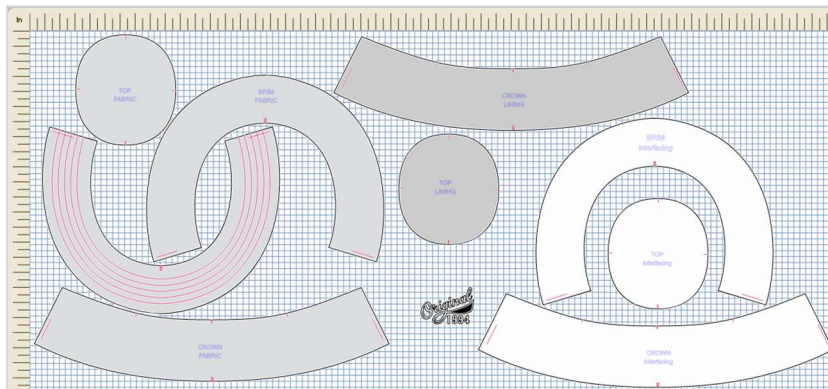
What you need

- Cotton Fabric -24” x 24” (61cm x 61cm)
- Printed Cotton Fabric for lining - 24” x 12” (61cm x 30.5cm)
- Fusible Interfacing - 24”x 20” (61cm x 50cm)
- Cotton Twill Ribbon 1” (25mm) wide, 24” (60 cm) long (for “sweatband” inside hat)
- Heat Transfer Vinyl
- Standard Grip Mat 12” x 12”
- Fabric Grip Mat 24” x 24”
- Basic Blade
- Rotary blade

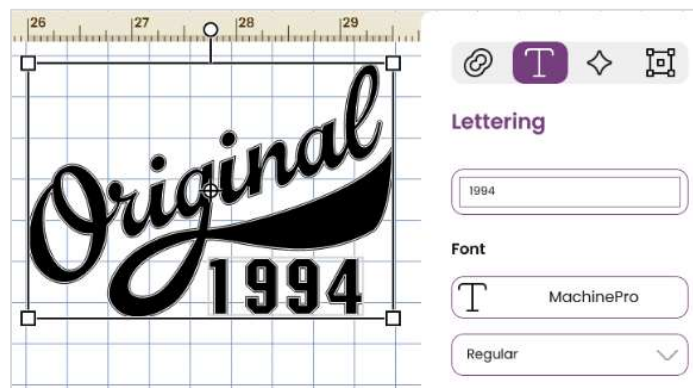
- Fabric Washable Pen
- Brayer
- Heat Press
- Weeding Tool
- Parchment Paper
- Sewing Machine
- Thread
- Lint Roller
- Hand Sewing Needle

Directions

1. Open the project in Canvas.



2. Select the Original 1994 vinyl design layer. In the Lettering menu, type in the year you have selected.

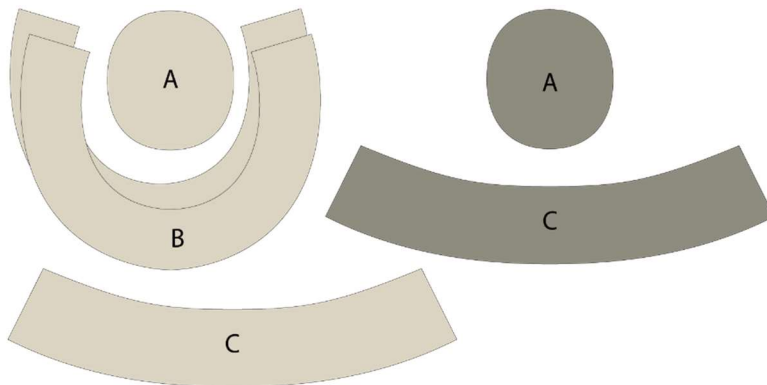


3. Go to the Output Menu and press Send to Machine. Place the Heat Removable Fabric Pen on the right side of your crafting machine's tool holder, and the Rotary Cutter on the left side.

4. Place the main fabric on your 24" x 24" Fabric Grip Mat. The grain of the fabric should run in the same direction as the grid on the mat. Use a Brayer to help adhere the fabric to the cutting mat, eliminating wrinkles or bubbles.
5. Follow the steps to draw and cut the fabric on your crafting machine. Then cut the lining fabric and the fusible interfacing.

Note: When using more than one material, check all settings and customize inputs for your mat size, material type, material size, and arrangement of pieces before selecting next to begin cutting each layer.

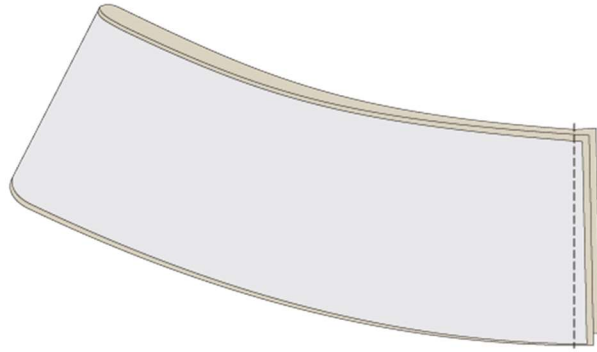
6. Place the Heat Transfer Vinyl, shiny side down (clear liner) on the standard grip mat. Make sure the design is flipped for reverse cutting. Follow the steps to cut the vinyl on your crafting machine.



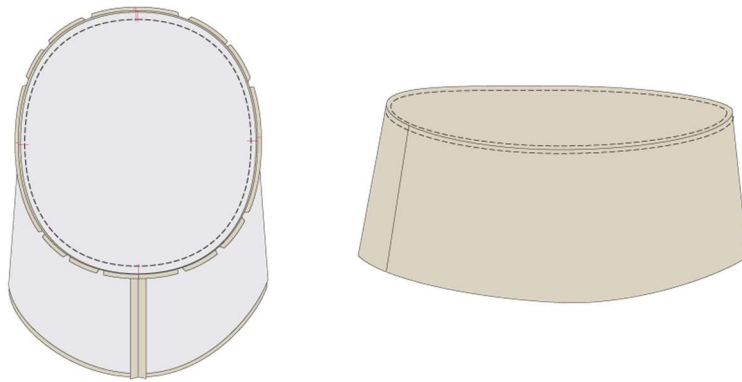
7. Use your Heat Press or iron to fuse the interfacing onto the wrong side of the outer fabric pieces.
8. At this stage you can add the vinyl design to the hat, as it is easier to apply the vinyl on a flat surface. Or you can leave it to the last step and use a Mini press or iron to fuse it in place on the finished hat.
9. Use a Weeding Tool to remove unwanted iron-on pieces, leaving the design on the clear liner. Use a lint roller to clean any stray lint or fuzz from the area where you plan to adhere the vinyl. Position the vinyl design on Crown C. Use your Heat Press to apply the vinyl to your project. Peel off the clear transfer sheet.



10. Set your sewing machine for straight stitch and sew Crown C together at the center back using $\frac{1}{4}$ " (6mm) seam allowance.

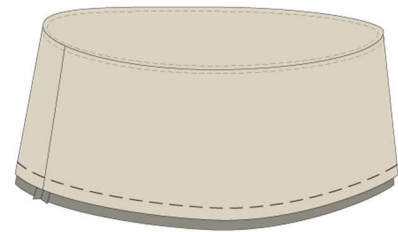


11. Pin Top A to the crown, matching centers, and clipping crown where necessary. Stitch using $\frac{1}{4}$ " (6mm) seam allowance. Edgestitch top and crown along seam.

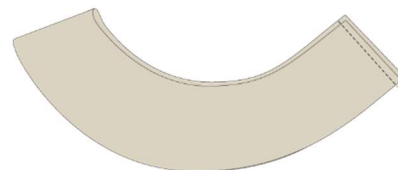


12. Prepare Crown Lining C and Top Lining A in the same manner as hat, omitting edge stitching.

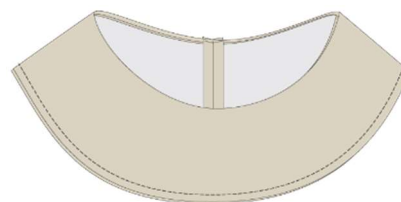
13. With wrong sides together, pin lining to the hat, matching seams and centers. Use a longer stitch to baste raw edges together.



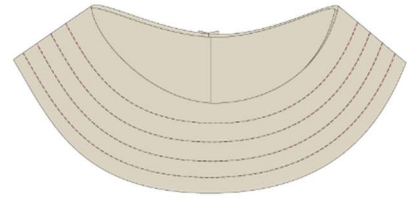
14. Stitch each Brim B section together at the back.



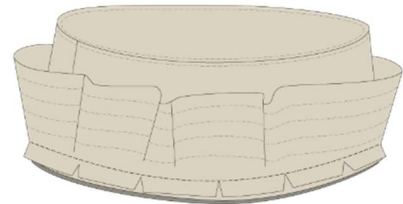
15. Place the brim sections right sides together and stitch together along the curved outer edge using a $\frac{1}{4}$ " (6mm) seam allowance. Turn right side out and press.



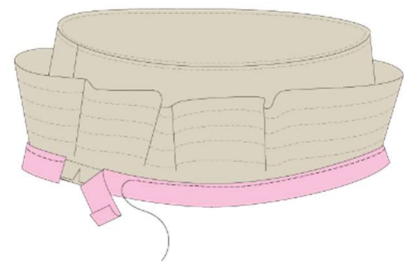
16. Stitch brim along the marked stitching lines.



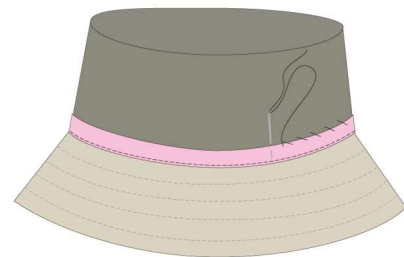
17. Pin brim to crown, matching centers and clipping brim where necessary, sew the pieces together using a 1/2" (12mm) seam allowance.



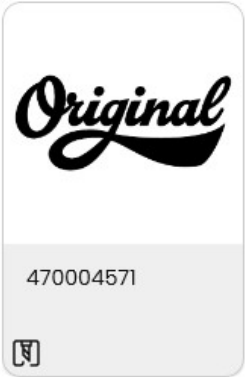
18. Pin the ribbon to the lower edge of the crown, placing one long edge slightly over the previous seamline. Fold the short end back and overlap at center back. Stitch along the seam line.



19. Turn the ribbon to the inside, press. Use the hand sewing needle and sew the ribbon to the lining.



Images used in this project



Font

