

# Mr Teddy

Helene Koch

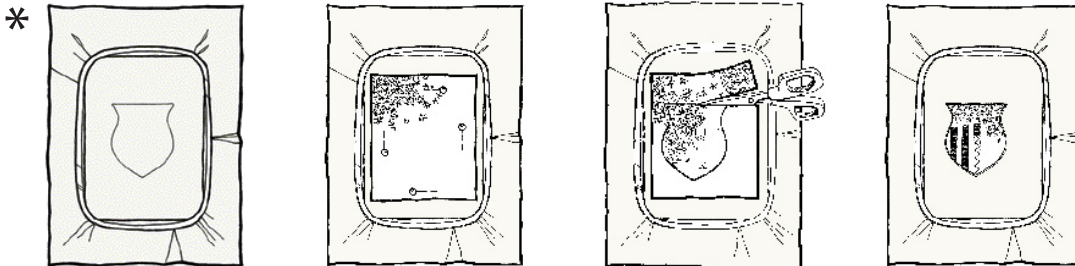


Sewing  
Instructions  
included.

# Mr Teddy

Mr Teddy sewing instructions page 20

Mr Teddy  
designed by  
Helene Koch



All designs are stitched with Sulky decorative thread.



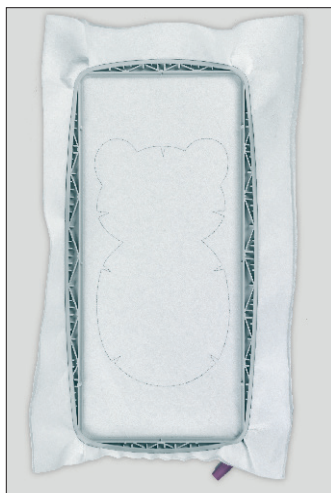
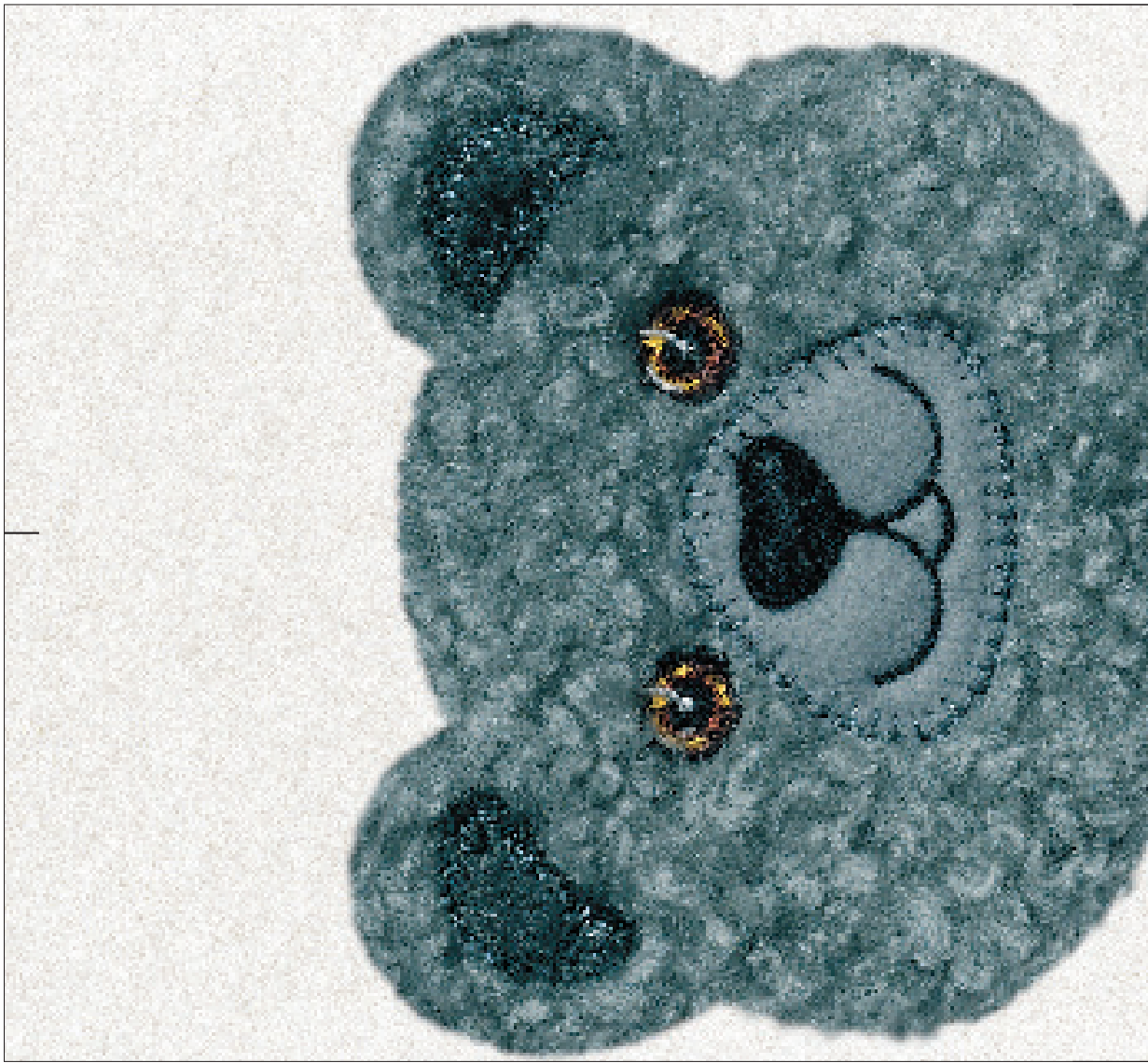
1

Stitches: 7 328  
Height: 272 mm  
Width: 148 mm

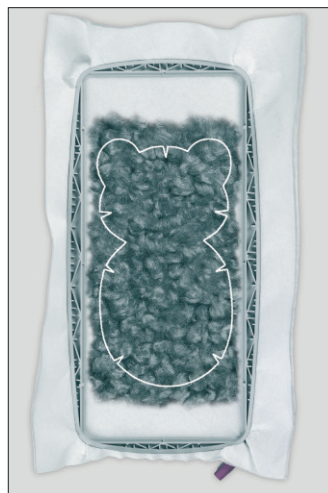
Designer I  
MENU

1

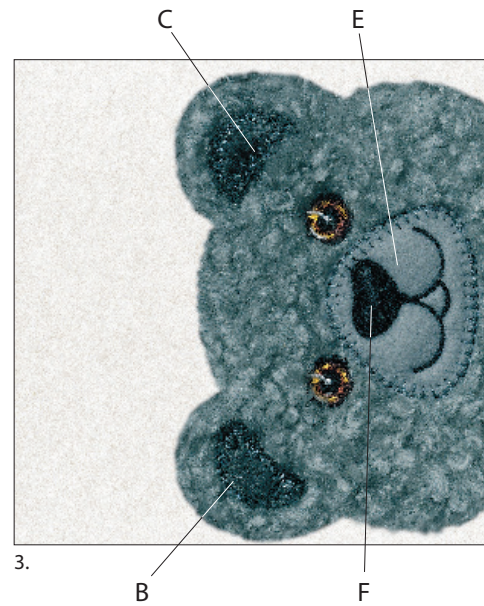
- 1 1041
- A\* 2 1041
- 3 1041
- B\* 4 1041
- 5 1041
- C\* 6 1041
- 7 1041
- D\* 8 1041
- 9 1041
- 10 1041
- E\* 11 1041
- 12 1041
- 13 1005
- F\* 14 1005
- 15 1005
- 16 1005
- 17 1137
- 18 1057
- 19 1129
- 20 1001



1.

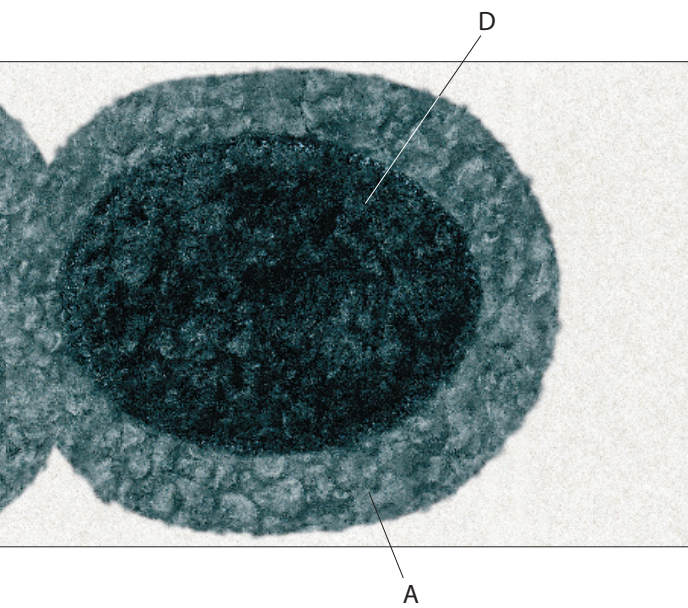
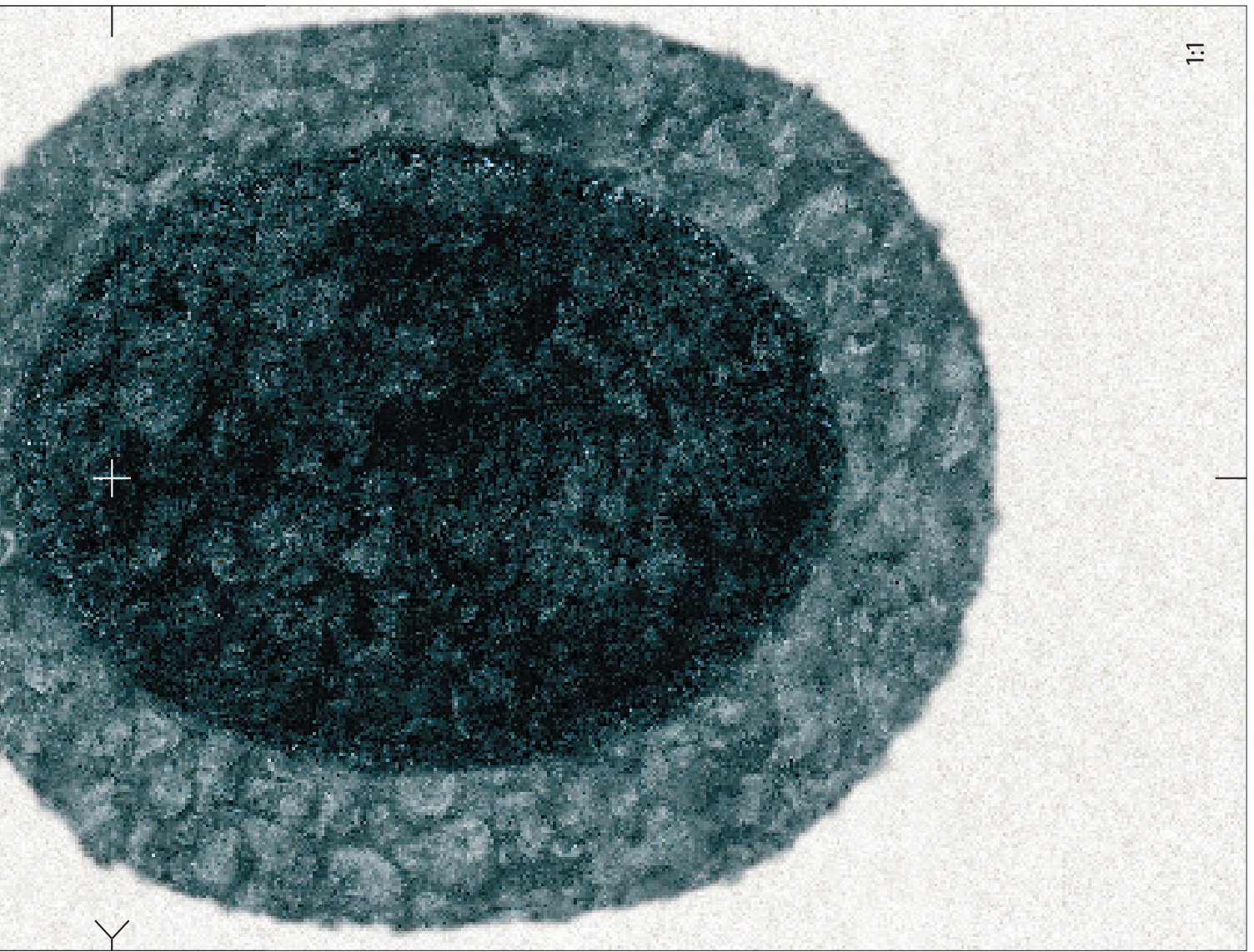


2.



3.










4.

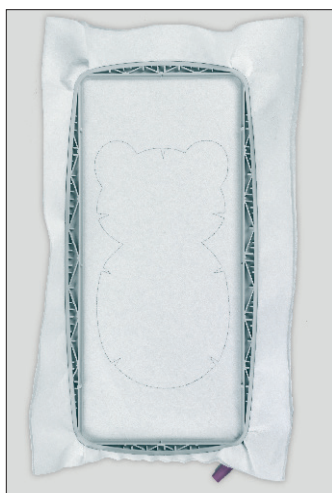
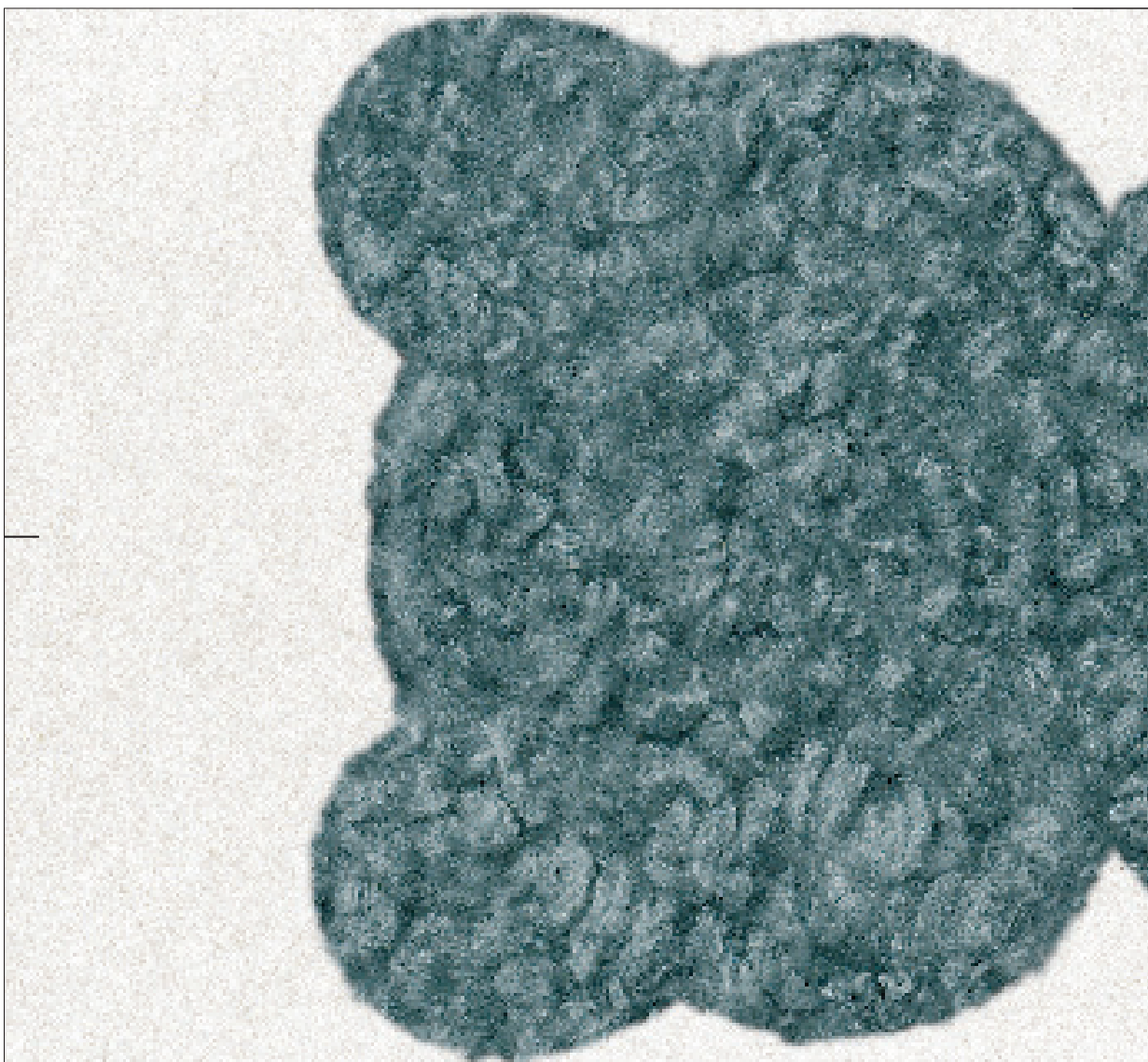
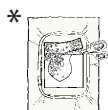
2

Stitches: 1 575  
Height: 272 mm  
Width: 148 mm

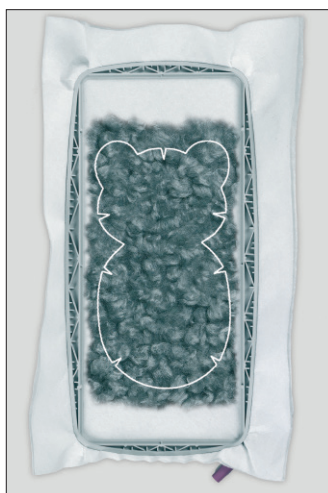
*Designer I*  
MENU

1

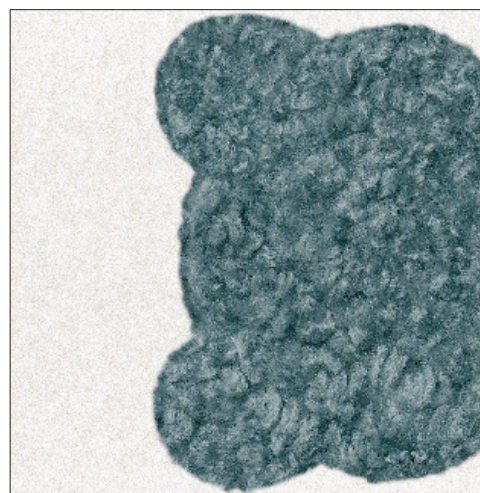
- |    |   |      |
|----|---|------|
| 1  |  | 1041 |
| A* |   |      |
| 2  |  | 1041 |
| 3  |  | 1041 |
| B* |   |      |
| 4  |  | 1041 |
| 5  |  | 1041 |



1.

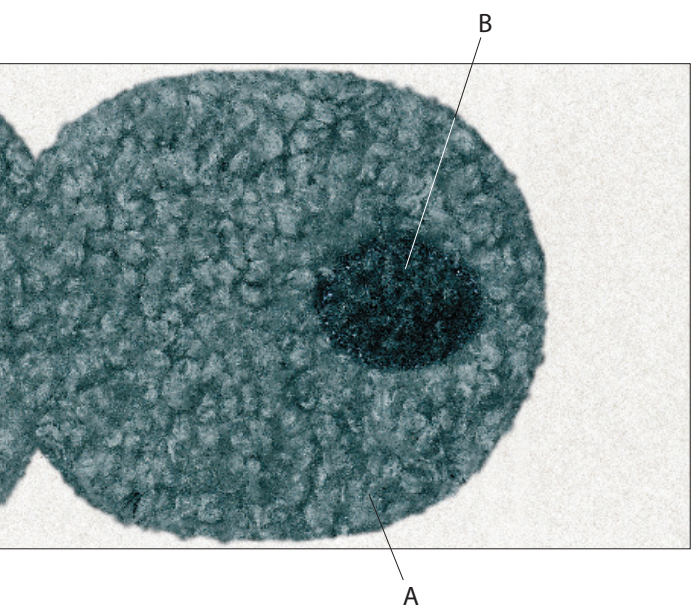
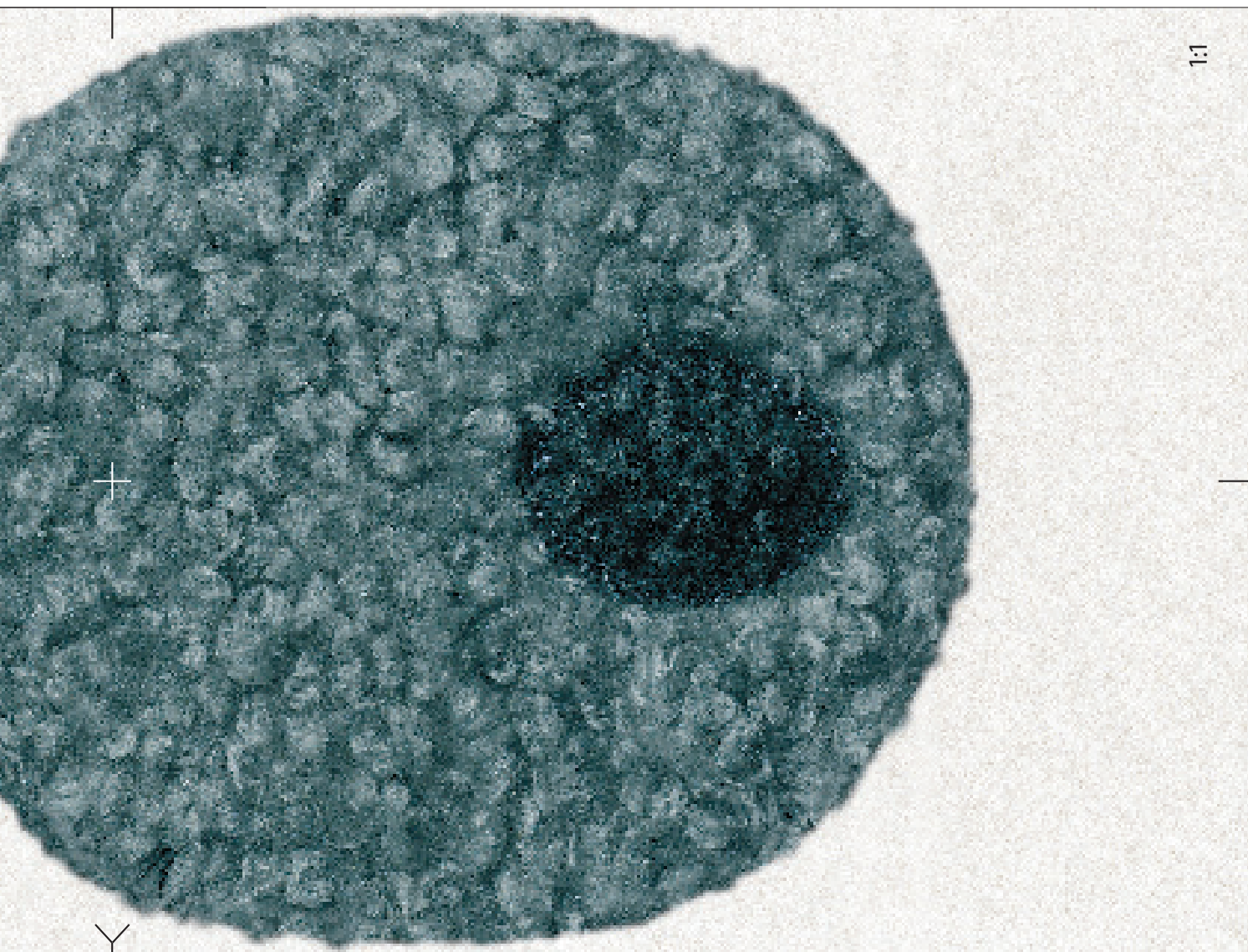


2.



3.














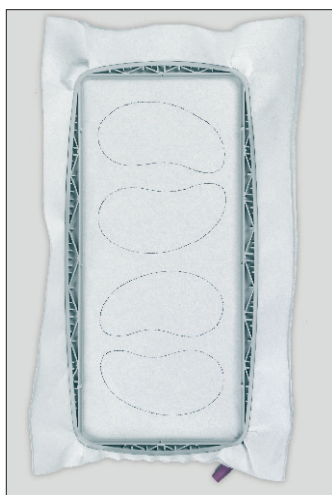
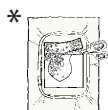
# 3

Stitches: 2 167  
Height: 338 mm  
Width: 144 mm

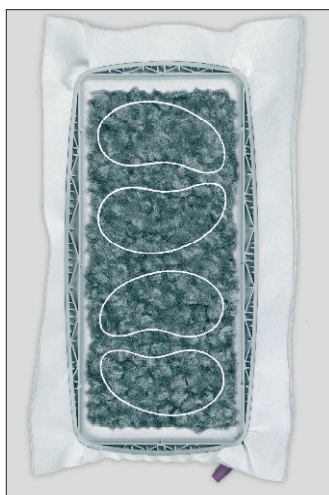
*Designer I*  
MENU

## 1

- 1  1041
- A\* 2  1041
- 3  1041
- 4  1041
- B\* 5  1041
- 6  1041
- 7  1041
- C\* 8  1041
- 9  1041



1.

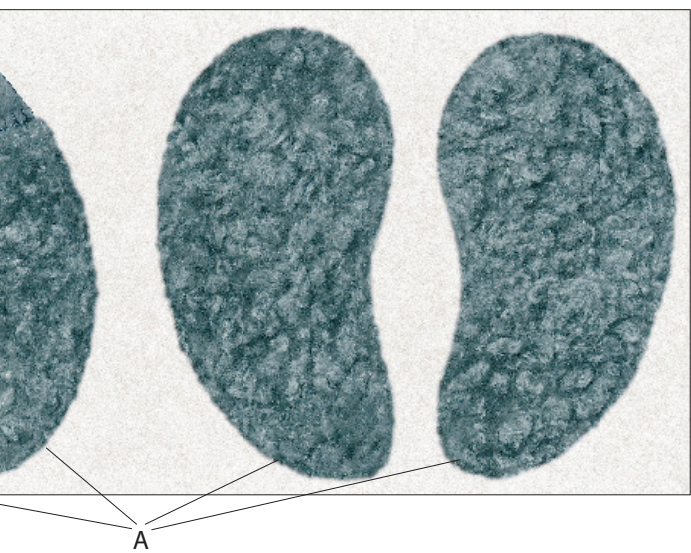


2.



3.





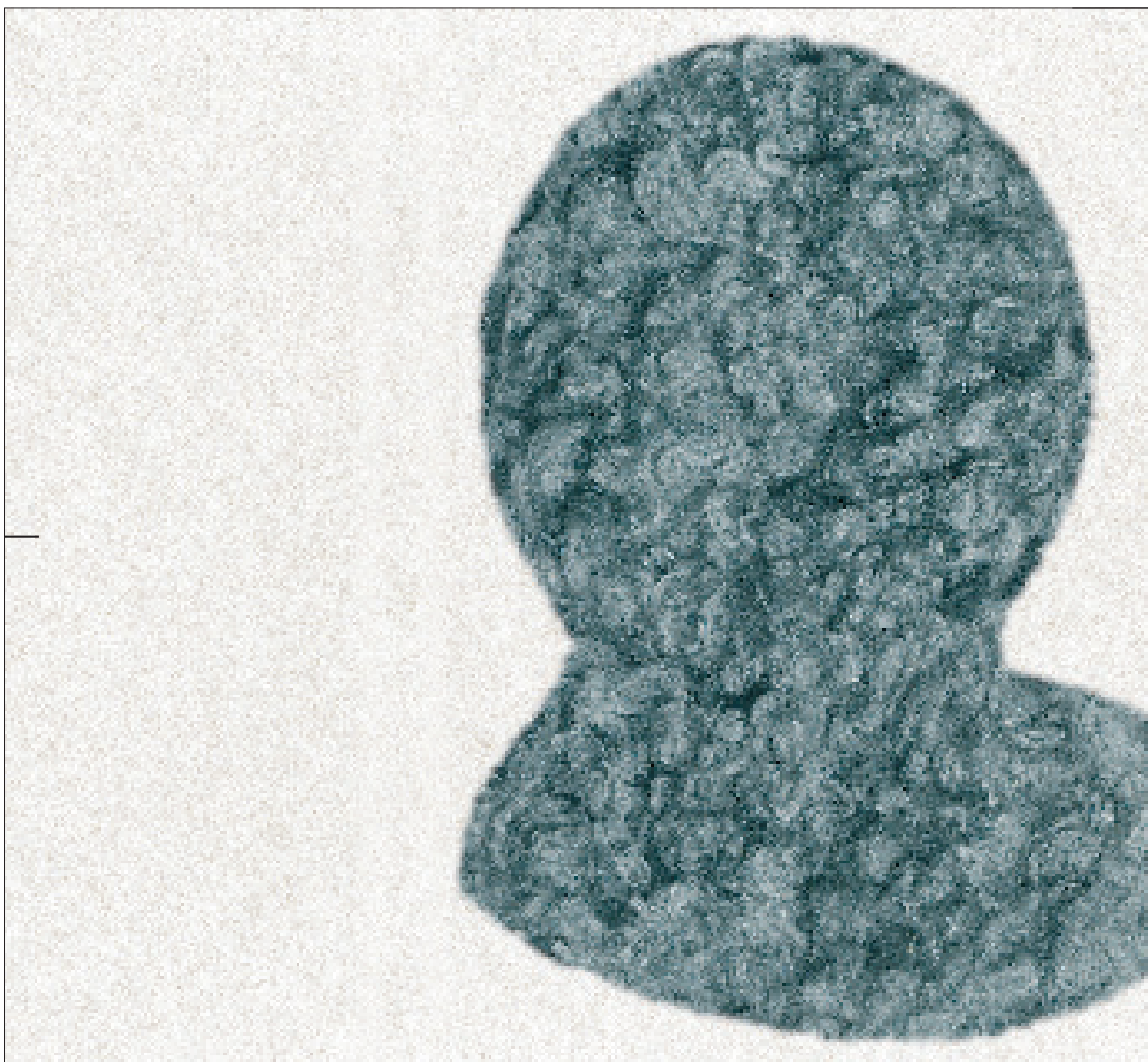
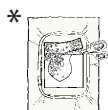
4

Stitches: 769  
Height: 230 mm  
Width: 141 mm

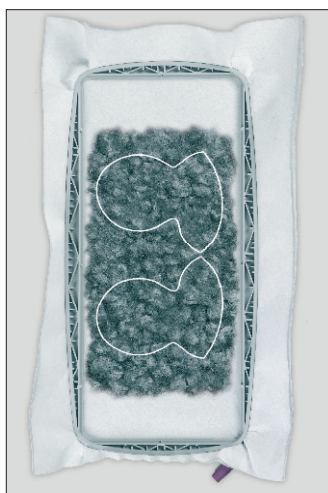
*Designer I*  
MENU

1

1 1041  
\*  
2 1041



1.



2.






5

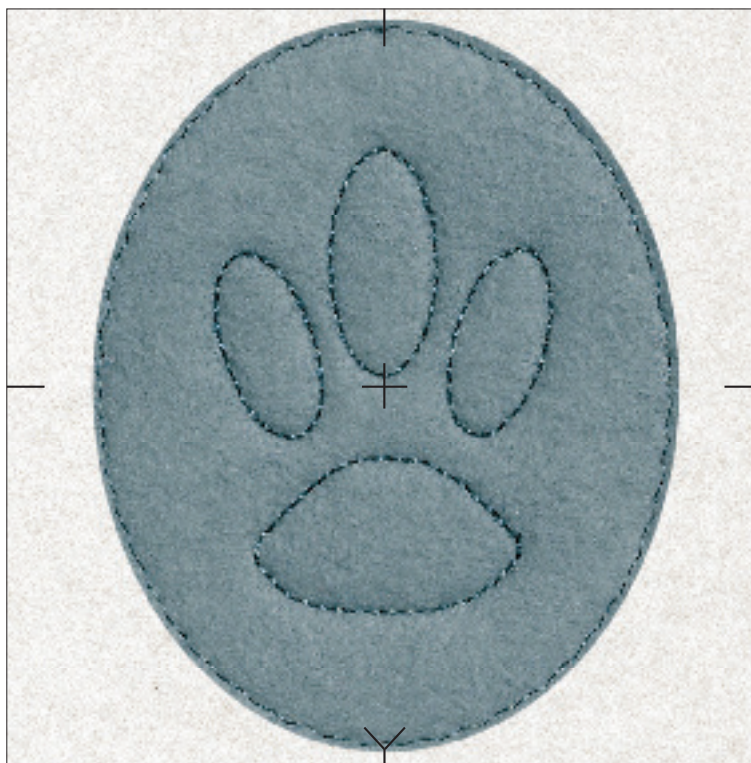
Stitches: 624  
Height: 95 mm  
Width: 76 mm

*Designer I*

MENU

1

- 1  1041
- \*  1041
- 2  1041








6

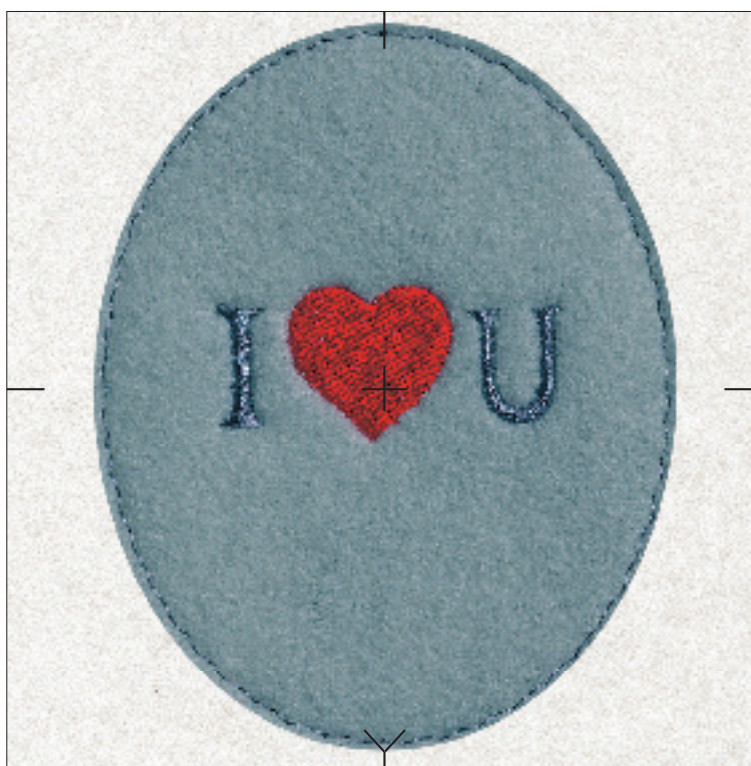
Stitches: 1 114  
Height: 95mm  
Width: 76 mm

*Designer I*

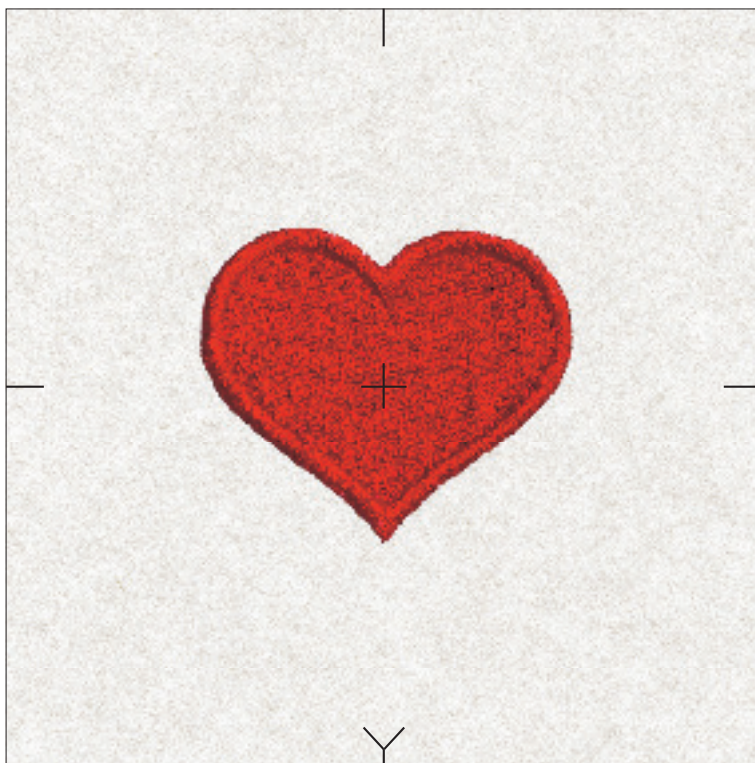
MENU

1

- 1  1041
- \*  1041
- 2  1041
- 3  1041
- 4  1039







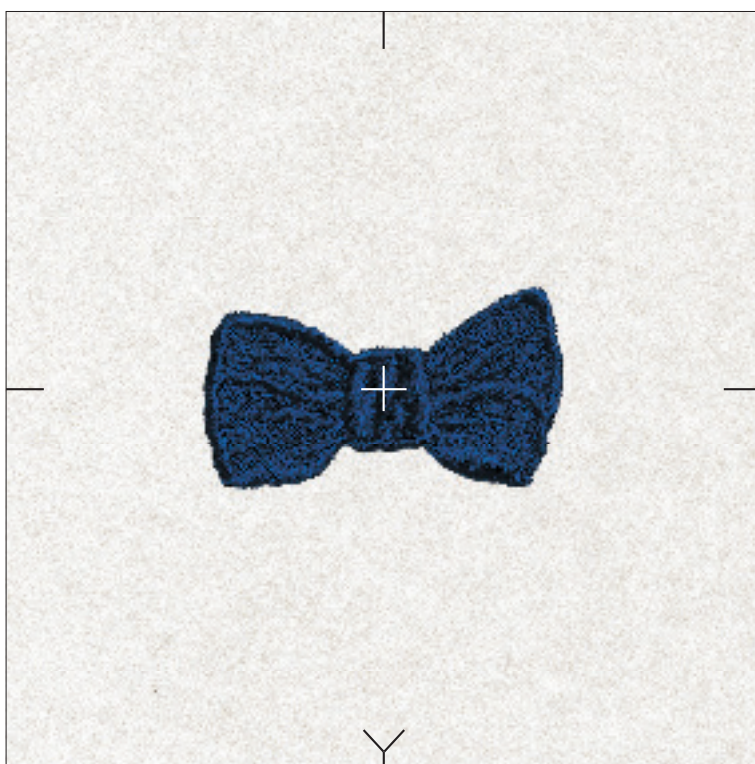
Stitches: 3 587  
Height: 42 mm  
Width: 51 mm

7

1  1037

*Designer I*  
MENU

2



Stitches: 3 180  
Height: 27 mm  
Width: 49 mm

8

1  1042

*Designer I*  
MENU



















2

9

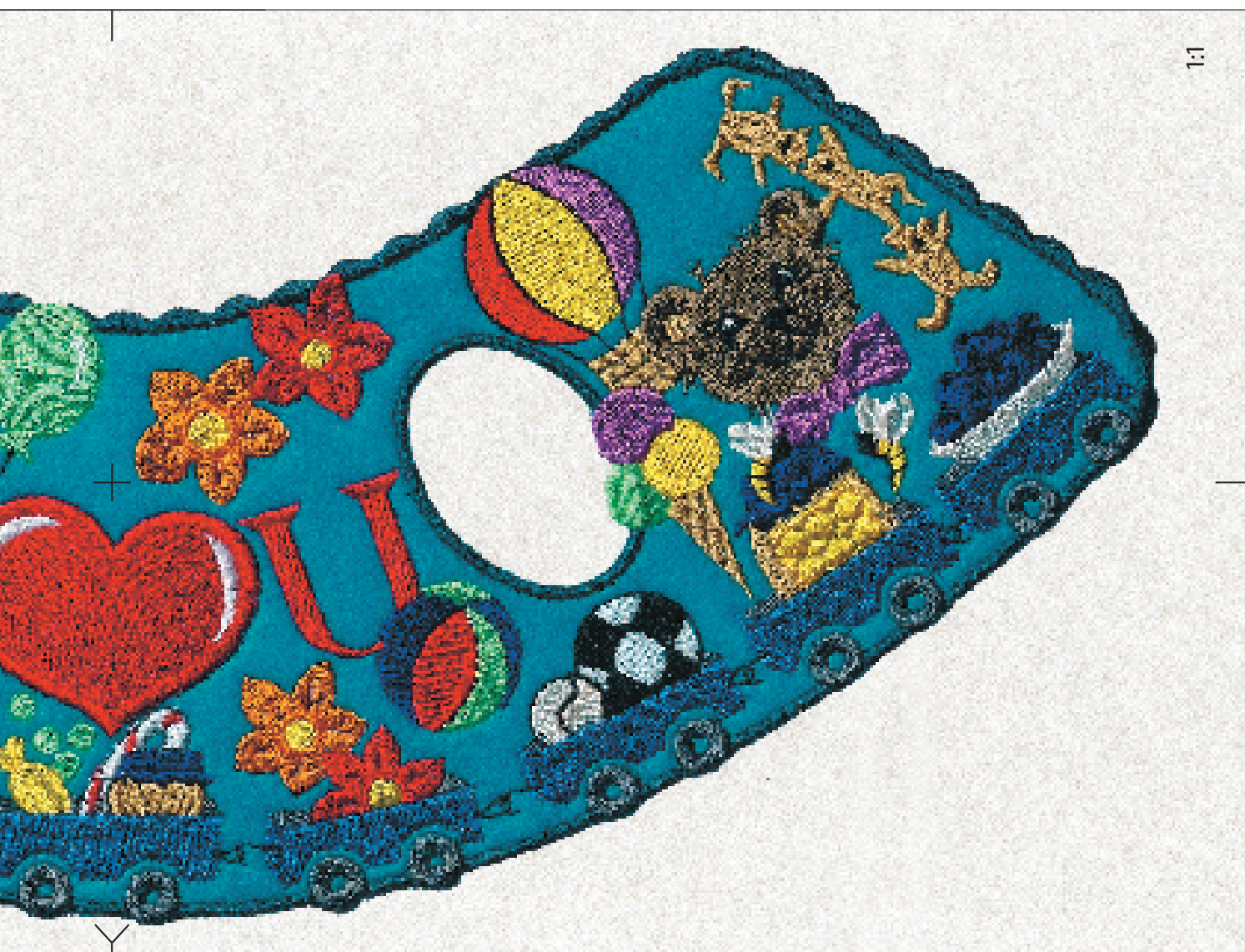
Stitches: 62 300  
Height: 334 mm  
Width: 141 mm

*Designer I*  
MENU

2

- |    |   |      |
|----|---|------|
| 1  |  | 1171 |
| *  |   |      |
| 2  |  | 1171 |
| 3  |  | 1171 |
| 4  |  | 1171 |
| 5  |  | 1510 |
| 6  |  | 1126 |
| 7  |  | 1042 |
| 8  |  | 1024 |
| 9  |  | 1170 |
| 10 |  | 1168 |
| 11 |  | 1037 |
| 12 |  | 1001 |
| 13 |  | 1017 |
| 14 |  | 1220 |
| 15 |  | 1143 |
| 16 |  | 1033 |
| 17 |  | 1173 |
| 18 |  | 1005 |













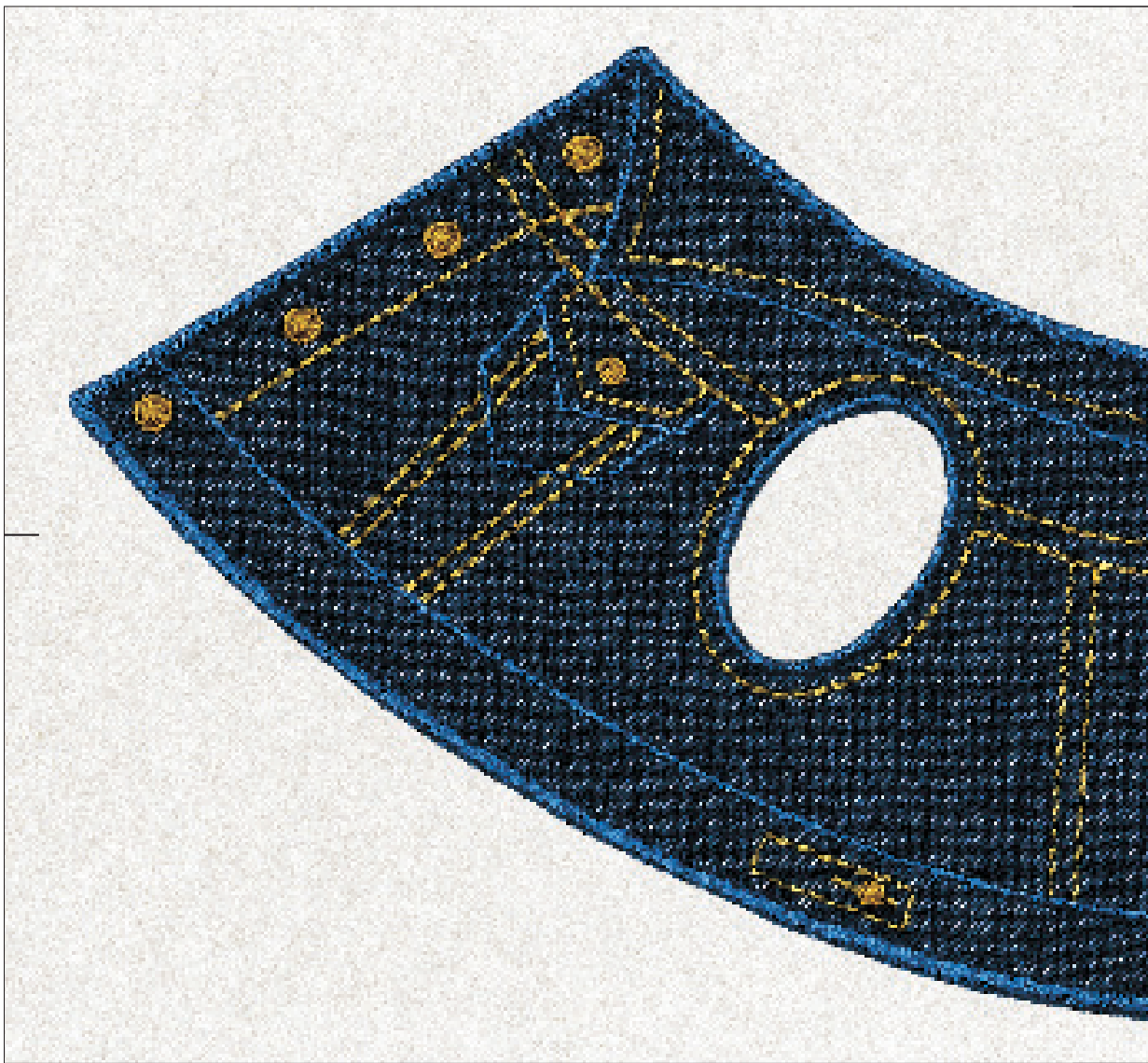
10

Stitches: 16 380  
Height: 344 mm  
Width: 139 mm

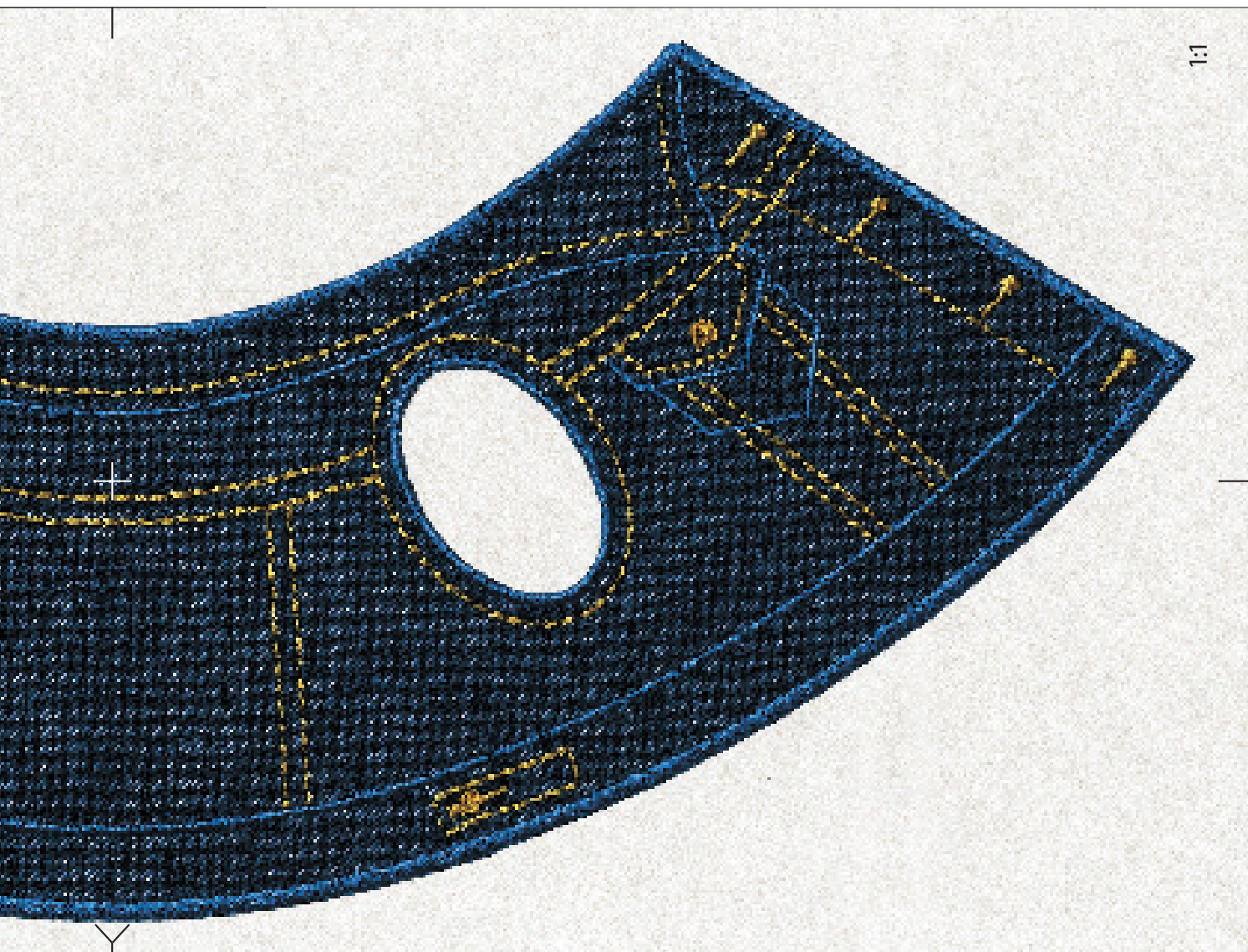
*Designer I*  
MENU

2

- 1  1198
- \*  1198
- 2  1198
- 3  1198
- 4  1137
- 5  1025
- 6  1198
- 7  1198

















1:1

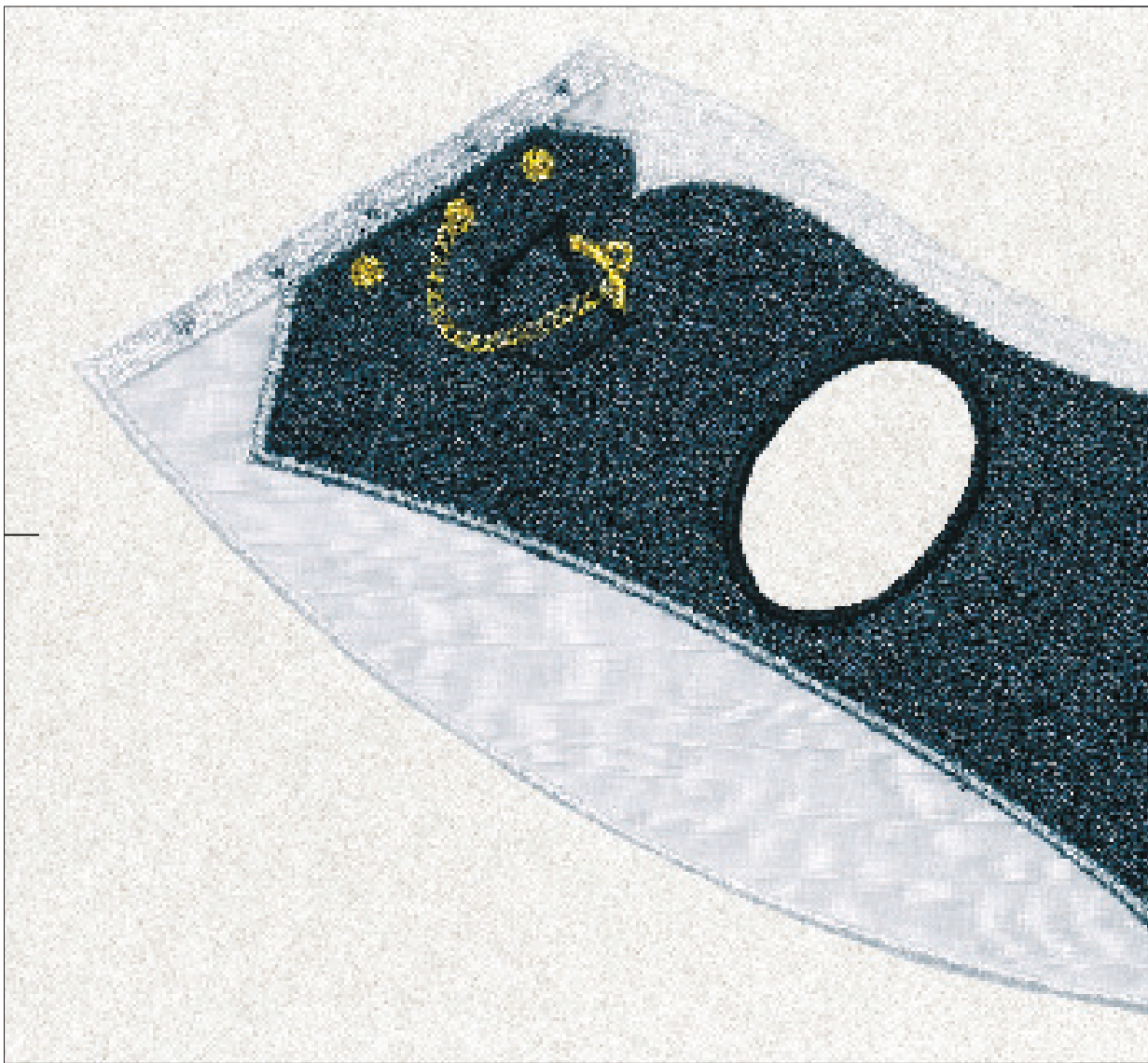
# 11

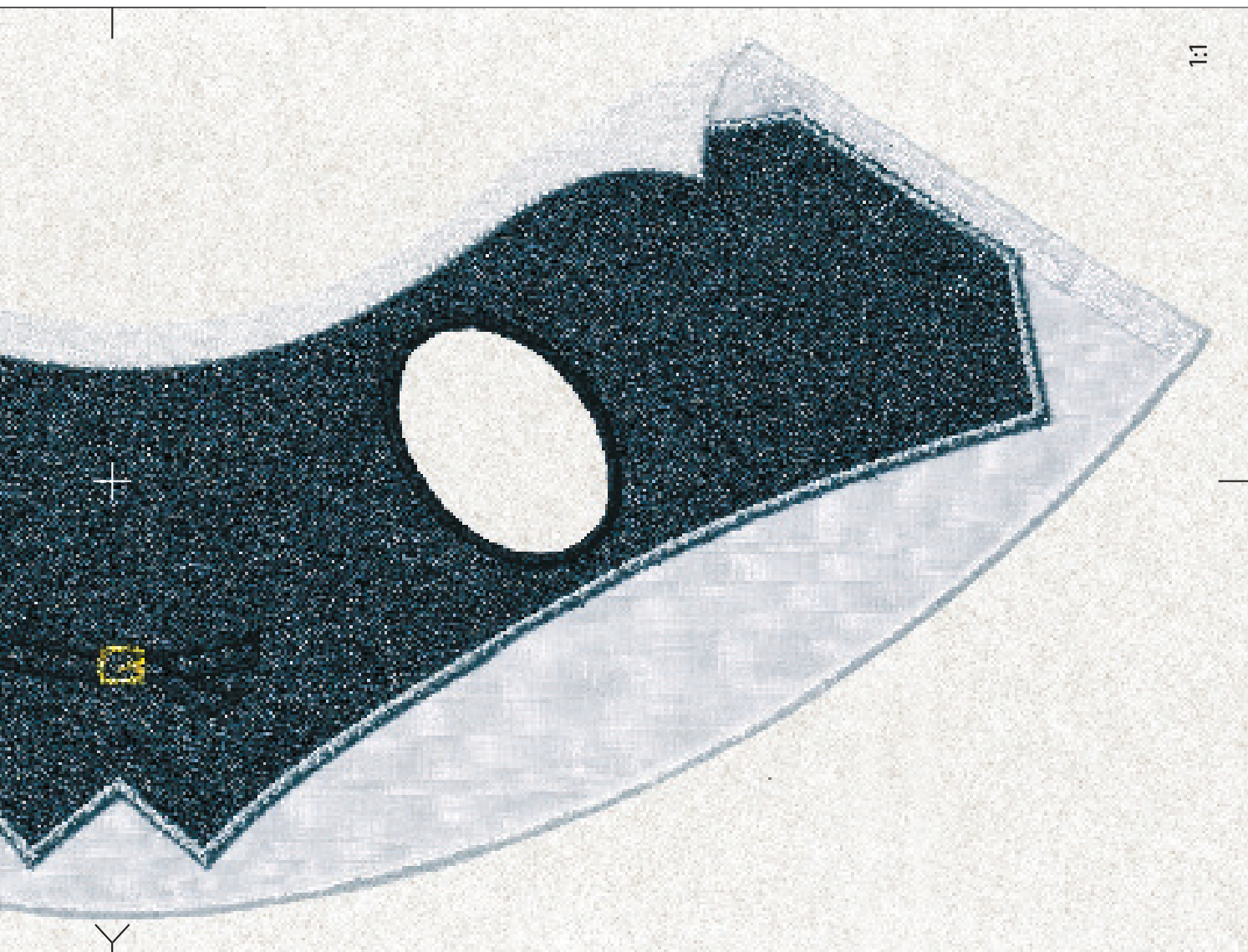
Stitches: 21 642  
Height: 348 mm  
Width: 140 mm

*Designer I*  
MENU

2

- 1  1001
- \* 2  1001
- 3  1001
- 4  1011
- \* 5  1011
- 6  1011
- 7  1002
- 8  1005
- 9  1005
- 10  7007





1:1

# Mr Teddy sewing instructions

## Mr Teddy

Sewing level: 2

### Sewing Supplies

30½" x 14" (77,5 x 36 cm) of light grey teddy/fake fur fabric

8" x 4 1/3" (20 x 11 cm) of dark grey teddy/fake fur fabric

12" x 9" (30 x 23 cm) of light grey felt

14" x 6" (36 x 15 cm) of turquoise felt

Scrap of black fake leather

Frey Sewing thread,

Assorted embroidery threads – see booklet

Filling

Handsewing needle

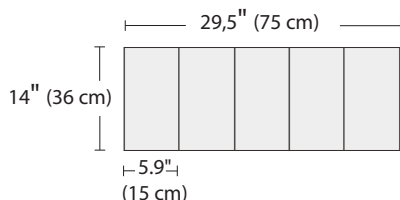
### Husqvarna Viking Accessories

Tear A Way™ stabilizer

Aqua Magic or Ultra Solvy Sulky Water Soluble Stabilizer

Quilter's ¼" Piecing Foot (412 78 55-45)

### Cutting Scheme, light grey teddy/fake fur fabric



### Embroidery

Slide on the embroidery unit. Thread your Husqvarna Viking Embroidery Machine with embroidery thread on top, unless there are other directions, and bobbin thread in the bobbin. Hoop Tear A Way™ stabilizer in the Mega Hoop. Choose design #1 and embroider color #1, the outline marking for first fur appliqué teddy bear body piece. Insert the appliqué fabric and continue embroidering (see detailed pictures for separate designs). When finished, cut out the pieces just outside the stitches. Repeat for all pieces of Mr Teddy.

**Please note that all body pieces for Mr. Teddy are created with this appliqué technique. Only Tear-A-Way stabilizer is hooped.**

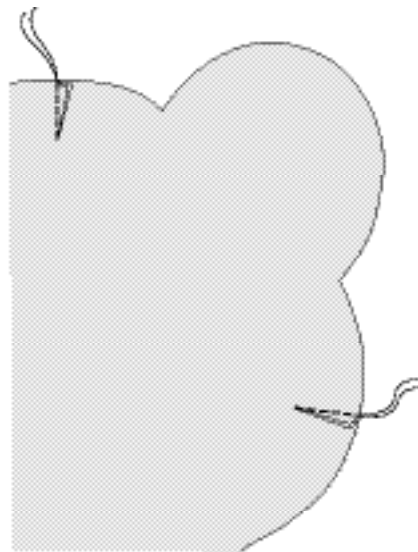
Embroider design number 7 on Sulky Ultra Solvy water soluble stabilizer using the same thread on top and in the bobbin to make a heart.

Embroider design number 9, using the turquoise 20 felt, to make Mr. Teddy's vest.

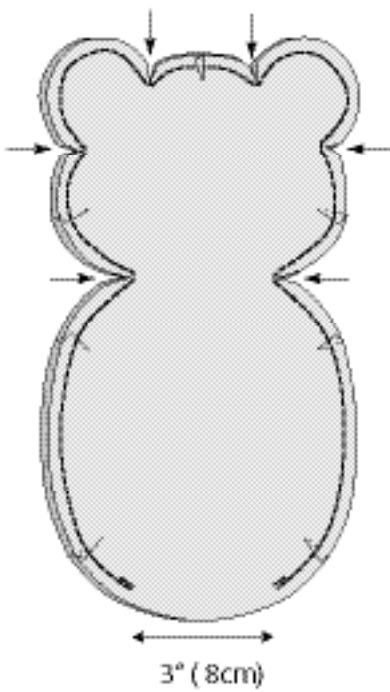


1.

When all pieces of Mr. Teddy are embroidered, remove the embroidery unit. Snap on the Quilter's ¼" Piecing Foot. Rethread with sewing thread on top and in the bobbin. Select straight stitch.



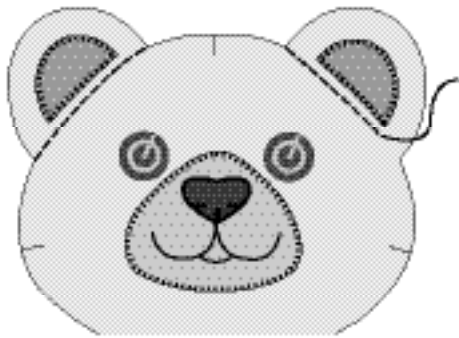




2.

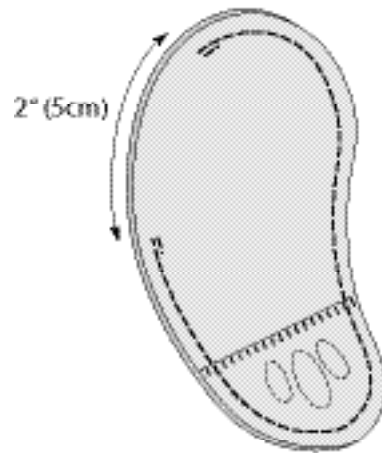
Place front and back pieces of the body right sides together. Sew all around the outer edge leaving a 3" (8 cm) opening at the bottom. Cut small notches as illustrated and turn right side out.

Hint: Tuck in the fur between the two layers when you sew the parts together for a better result and an invisible seam.

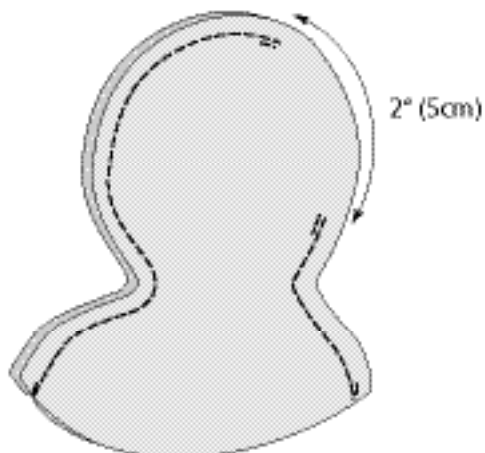


3.

Sew a straight stitch seam between the ear and head to keep the filling in the head, and out of the ear. Repeat for both ears.



Place the parts for the arms right sides together and sew all around leaving a 2" (5 cm) opening at the outside of the arm. Turn right side out. Repeat for both arms.



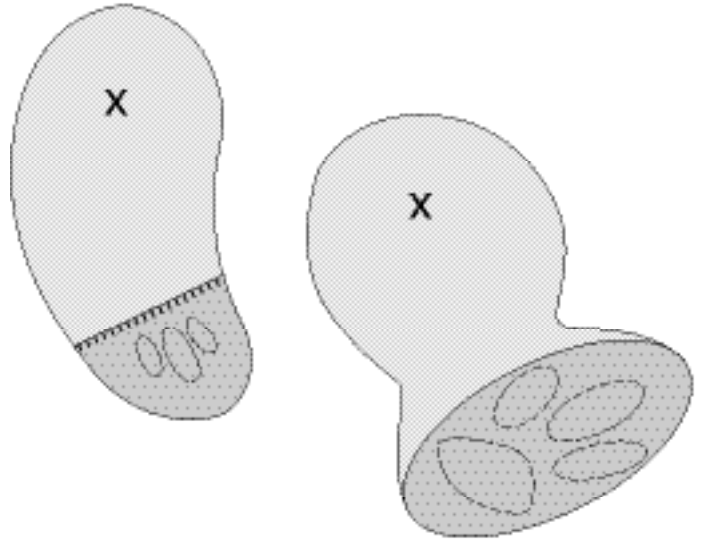
5.

Place the parts for the legs right sides together and sew all around leaving openings as illustrated.



6.

Pin the paw pads right sides together with the legs or paws and sew all around.



7.

Turn the legs right sides out.

#### Filling

Start filling the body. Fill the head, form the head by pushing the stuffing/wadding out in the nose.

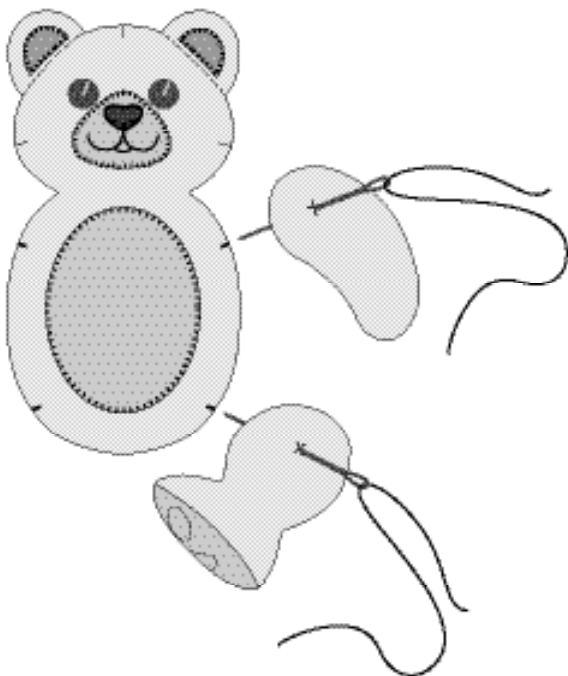
**Tip:** Stitch by hand around the nose with large stitches to help the nose shape to be more pronounced. Fill the arms and legs.



To give Mr Teddy a soul, place his heart inside the body. Sew all the openings closed by hand.

#### Assemble

Fastening points are the parts on the body and on the arms and legs as illustrated, where they are joined.



8.

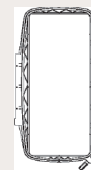
Stitch by hand through the arm/leg by the fastening point and then in the body a few times. Tighten carefully and wind the thread a couple of times like when you sew on a button by hand. Fasten the thread and now Mr Teddy is able to move his arms and legs.



**G**ive Mr Teddy a soul – embroider a heart  
on water soluble and place it inside him.

# Mr Teddy

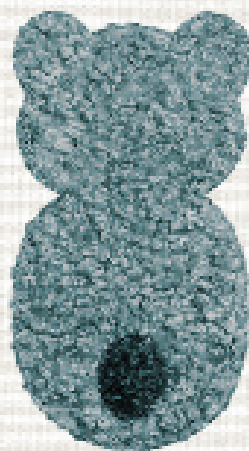
designs 360 x 150 mm, 14.2 x 6"



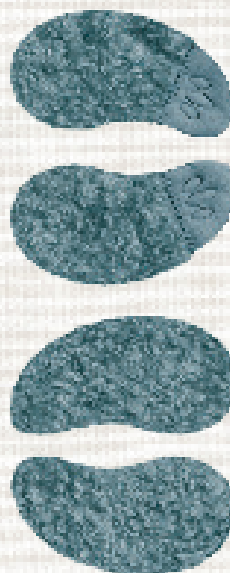
1.



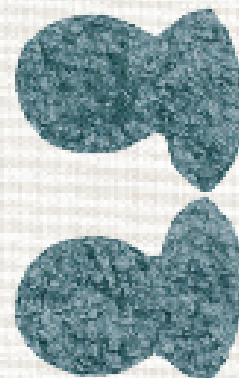
2.



3.



4.



5.



6.



7.



8.



9.



10.



11.



[www.husqvarnaviking.com](http://www.husqvarnaviking.com)

All content, including designs, images, trademarks, etc on this collection belongs to VSM Group AB and/or its affiliates or partners and may not, apart from what may be explicitly allowed by law, be reproduced, distributed or used in any other way without the consent of VSM Group AB. The copyrighted designs on this media are for the original purchaser's personal use only and not for industrial use. The designs MAY be sewn on items for resale but only if sewn by the original purchaser of the collection and only with a single head home embroidery machine. VSM Group AB will not be held liable for any damages or losses resulting from the use of the designs.